

The Postal History Foundation's

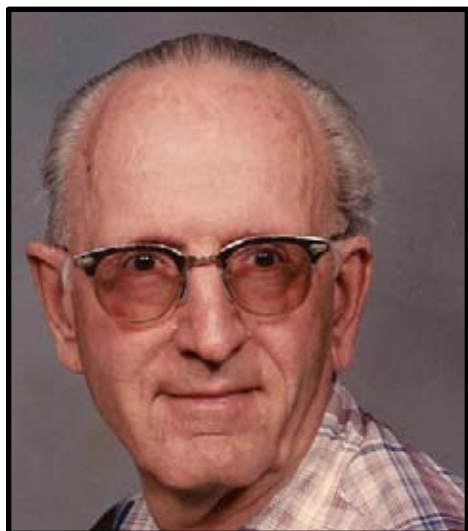


Stamp Tracks

Fall 2009

NEWS AND INFORMATION FOR PHILATELISTS OF ALL AGES

IN MEMORIAM: Carl Spitzer



1923-2009

Carl Spitzer, long-time Librarian at the Postal History Foundation died on September 29, 2009, in Tucson, Arizona. He was born in San Francisco, CA, on October 21, 1923. Carl grew up in Marin County, CA, north of San Francisco, planning to study history at the University of California. Because of an illness his studies were cut short for a time and after his recovery he continued his studies at Marin Junior College. However, his studies were cut short again when he entered the Army in 1943

during World War II. While in the Army he served as a surgical technician and company clerk. After leaving the Army in 1945 he returned to Marin Junior College where he met his future wife Sylvia whom he wed in 1949. After finishing his schooling at Marin Junior College he entered the University of California/Berkley where he earned a Master's Degree in Entomology. The Spitzer's first child, Richard was born in 1950 and soon thereafter the Korean War began and Carl was reactivated and soon found himself sent to Korea in 1951. While on active duty in Korea Sylvia gave birth to their twin sons, Bill and Ray. After Korea Carl was stationed in Japan where he was joined by Sylvia and their children. Over the next several years Carl and Sylvia had three more children; Ron (born in Montana), Evelyn and Robert (born in Nogales, Arizona) who blessed them with 15 wonderful grandchildren.

After service in Japan the Spitzer family lived briefly

in Montana during 1954 and then moved to Nogales, Arizona in 1955, where Carl was an inspector for the Department of Agriculture along the Arizona-Mexico border. He also attained the position of the chief entomological inspector/expertizer along the Southwest border from El Paso, TX to Southern California. All insects found during border inspections were sent to Carl for identification. After 13 years in Nogales the Spitzers moved in Tucson where Carl worked at the Tucson International Airport for the Department of Agriculture inspecting all private and commercial airline flights at the airport. He retired in 1984. He had joined the Army Reserve after leaving the Army at the end of World War II and he retired as a Lt. Colonel in 1978.

Carl was an avid stamp collector for over 70 years. With his ever inquisitive mind and his life-long interest in insects, it was just natural that he would prepare a

(continued on next page)

Spitzer *(continued from front)*

"BUZZ" (honey bees on stamp and related items) for several years all over the world. His exhibit traveled to exhibitions in Italy, Singapore, Canada, England, and the Pacific '97 International Show in San Francisco, among other locales. Throughout the years of it being exhibited "BUZZ" won many awards, including a VERMEIL. In addition, Carl was always ready and willing to share his knowledge and experience wherever approached by novice or experienced stamp collectors.

Volunteering was always a large part of Carl's life. He volunteered at the Davis-Monthan Air Force Base in Tucson for seven years assisting service personal in preparing their income taxes. In addition he volunteered at the D-M Pharmacy. Carl was a ded-

icated officer for many years in both the Tucson Stamp Club as well as the Arizona Federation of Stamp Clubs. In addition, he was also an Arizona Philatelic Ranger.

Carl started volunteering at the Postal History Foundation in 1984-85, and took on the duties of Librarian. At that time the Library was still housed in the main building as the Slusser Library building had not yet been constructed. Carl served continuously for twenty-four years as Librarian for the Postal History Foundation and the Peggy Slusser Library (from its construction in 1997) until November 2008 and was responsible for organizing, maintaining, and developing the magnificent collection that the Slusser Library is today. In 2008 Carl received

the Outstanding Library Service Award from the Arizona State Library Association. Along with his lovely wife Sylvia, he continued to volunteer at the Library until this past summer.

All those within the Postal History Foundation family as well as all those that knew him and interacted with him over the years in ways large and small will be forever grateful to him for all his hard work and dedication. He was a true gentleman. The Postal History Foundation could never realize all its goals without the efforts of all its volunteers, and none exemplifies the spirit and substance of volunteerism more than Carl Spizer.

He will be sadly missed.

Who's Who

The PHF Family Portfolio

Officers:

Chairman	Bob Bechtel
Vice Chair	Paul Nelson
Secretary	David Bernheim
Treasurer	Bill Kohl

Staff:

Executive Assist:	Lena Rogers
Youth Ed:	Lisa Dembowski
Librarian:	Charlotte Cushman
Editor:	Frank Mallalieu

Acknowledgments

The PHF has received a very generous donation from Mark S. Schwartz of Philadelphia, PA. Mr. Schwartz made his donation in honor of Ron Cipolla on his receiving the Champion of Champions award at the recent Pittsburgh Stamp Show for his exhibit, How the Post Facilitated Distribution of the Printed Word 1775-1870. The PHF is very grateful for this very thoughtful donation.

The PHF is deeply indebted to its many members and friends who responded to Bob Bechtel's appeal for donations of stamps to the PHF to replenish the diminishing stock of stamps provided to young people through the PHF Education Department programs.

Celebrate the 50th Anniversary of the PHF in 2010!!!
Details will be announced soon!

The Weill Brother's Involvement In The Arizona Philatelic Rangers

By John Birkinbine II, Chairman, Arizona Philatelic Rangers



Raymond Weill

As a result of their wishes while still living, very little has been published regarding the Raymond H. Weill Company involvement with the Arizona Philatelic Rangers. When the writer once asked about this years ago, Raymond explained that the Weill brothers were generous with many philatelic institutions and did not wish details about any one of them published during their lifetimes. Now this important story can be told.

According to the Ranger financial accounting records, brothers Raymond H. Weill and Roger G. Weill were the very first persons to enroll as Deputy Sheriffs in the

Arizona Philatelic Rangers, contributing the then established standard of \$100 each on October 25, 1960. In today's dollars that would be \$675 each, this being a substantial amount at that time for a new philatelic organization. Later on, in recognition of their meaningful services to the Rangers, both Roger and Raymond were elevated to the status of Sheriff.

The Weill brothers also contributed stamps for the children's educational program at the nationally known Asthmatic Foundation in Tucson. This has now evolved into the present Postal History Foundation program in pub-

lic and private schools reaching over 3,400 children in 17 schools this year. In addition to stamps intended for the children, many valuable stamps and collections were contributed over the years towards the support of the Postal History Foundation. On several occasions, the previous Ranger chairman, Dr. Quintus Fernando, flew to New Orleans at the Weill brothers request. He was invited to climb up to the second floor of their shop and select collections stored there, that with the approval of Raymond, would then be taken back to Tucson as a donation to the Post History Foundation.

The Weill brothers' involvement was even more than that unprecedented gesture. Raymond Weill and New York auctioneer Robert A. Siegel worked closely together in approaching and arranging for the late Stephen D. Bechtel, founder and chairman of the world famous Bechtel Engineering firm, to sell an original book of United States proof issues and then donate all the funds required for the outright purchase of the present Postal History Foundation administrative building.

During those days the Ranger lunches at the WEST-

PEX stamp show became an annual destination point for all three of these famous philatelists. They intentionally wished to show support for the Rangers and Postal History Foundation activities, and succeeded admirably in this effort. Many important philatelists became Rangers during this time.

Later on when it became difficult for Raymond to travel, he would still maintain his sincere interest in the Rangers. Every year during the famous New Orleans philatelic "Happening", he would invite Elizabeth Pope (who was the Ranger "Justice of the Peace"), Bill and Sara McDaniel, and myself and wife, Seny, to Friday luncheon at the famous upscale Antoine's Restrant. While an enjoyable social occasion, Raymond never failed to inquire as to current Ranger activities and welfare, and to continue his generous donations.

Raymond maintained a permanent room at Antoin's exclusively available at all times for himself and his guests. He dined there frequently with foods being especially prepared by the chef. Bills were never presented, but rather a monthly billing was accumulated and paid through the mails.

Roger, Raymond, and their non-philatelic brother, George, were all born in St. Louis, Missouri. In 1926 the parents moved the family to New Orleans. The father, Fernand, was a stamp dealer

and the hobby and profession was transmitted to two of the sons. The very small shop premises in the French Quarter at 407 Royal Street was acquired in a 1932 depression purchase. This store became surrounded on three sides by the famous Manheim Antiques Galleries, and despite later constant overtures the Weill brothers would never sell the premises. Today the famous shop property remains in the Weill Trust, but unfortunately not as a philatelic center.

This trust was established when the Weill stock was sold for over \$10,000,000 to the Hambros Bank Ltd. in London in March of 1989. The bank later sold that philatelic stock through Christie's auctions. However the Weill brothers continued to purchase stamps for a new stock, albeit on a somewhat lesser level. They both truly enjoyed philately and preferred to visit one of their bank vaults and enjoy their possessions rather than to sell them. But sell them they would, with pride taken in embellishing another's collection.

Roger died March 2, 1991 at age 81. Raymond passed away April 21, 2003, at age 89. His estate donated portions of his library and personal business papers, as well as some nice memorabilia to the Peggy Slusser Library, which is a part of the Postal History Foundation.

Roger was an active Arizona philatelic Ranger for

31 years, and Raymond for 43 years. They were both ardent supporters of introducing youth to the joys of philately, thus benefiting children as well as providing for stamp collecting to be extended well into the future.



Editor's Note: The large wooden sign that hung out over the front door to the Weill's stamp shop in the old French Quarter of New Orleans was donated to the Postal History Foundation and is now on display in the Slusser Library at the PHF. Many readers will recognize this sign from the advertisements for Weill's stamp shop (the lovely watercolor painting of the front of their store on Royal Street that appeared for many years on the back covers of the APS journal as well as those of the Scott stamp catalog). The Postal History Foundation is particularly proud and grateful to have the honor of being able to display this historic artifact as part of our extensive collection of stamps and stamp related material as a reminder of not only the significant contributions that the Weills made to the Postal History Foundation, but the great generosity of these true icons of philately to so many individuals and organizations over the years of their long and productive lives.

**PHF Hours:
M-F 8am-3pm**



Library Corner

The library staff and volunteers were very sorry to say goodbye to longtime volunteer and friend, Carl Spitzer. Our deepest condolences to Sylvia, Richard, and the rest of his family.

Slusser Goes Online!

Thanks to funds granted by the Arizona State Library, Archives and Public Records Agency under the Library Services and Technology Act (LSTA), the first part of our catalog is now visible to the public on the Pima County Public Library website at: www.library.pima.gov/research/collections/phf.php

To limit the search function on the Pima County Public Library catalog's homepage <http://librarycatalog.pima.gov/>

- SELECT 'Postal History Foundation' instead of 'View Entire Catalog' in the drop down box;
- to browse the entire PHF collection, enter ** in the search box as your search term.

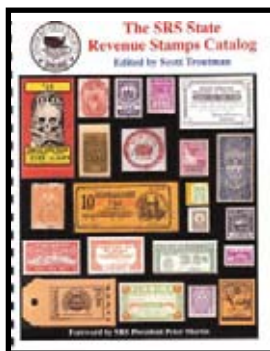
Although our materials do not circulate, they are available for use when the library is open from 8:00 am - noon, Monday through Friday or by special appointment. Catalogers Nancy Siner and Debbie Newman have created more than 4,000 electronic records thus far and are still hard at work. New holdings will continue to be added to

the catalog, so please check back and watch our progress!

New Acquisitions

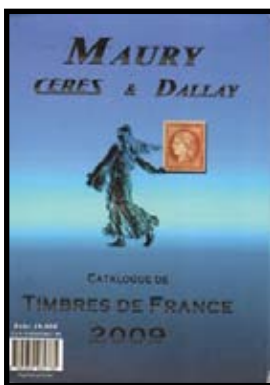
Recent arrivals in the library include a variety of catalogs, DVDs, and philatelic literature.

The SRS State Revenue Stamps Catalog (2007) edit-



ed by Scott Troutman. 700+ pages, with black and white illustrations.

Timbres de France (2009) published by Maury Ceres



& Dallay. 2 volumes, color illustrations.

Interview with Raymond Weill (1986) by S.M. Bierman. (DVD)

Michel Germany Specialized (in English); Vol. 1 & 2 (2007)

Standard Flag Cancel Encyclopedia (2008) by Frederick Langford (Fourth edition).

Library Sales

The library is offering many duplicates for sale, so that we can make room for new acquisitions. We have many journals, auction and stamp catalogs, and specialty philatelic literature for sale. For more information, stop by the library or check our website for a partial listing: <http://www.postalhistoryfoundation.org/libsales.html>

Library Wish List

Catalogs - year 2000 or newer:

- World specialized
- Country specific/any language

Welcome New Members!

Robert Schneider, Tucson, AZ
Rodger C. Hendrickson, Tucson, AZ
Michael & Cecilia Ball, Phoenix, AZ

Join The Fun!

Want to become a member of PHF? We offer various membership options. For information, contact Lena Rogers at (520) 623-6652 or at phf3@mindspring.com.

Correction

Save money and help the PHF" article in the Summer 2009 Stamp Tracks. The eBay address for Barrett Behnke was incorrect. Instead of "barrettstoys" it should be "barrettstoys1".

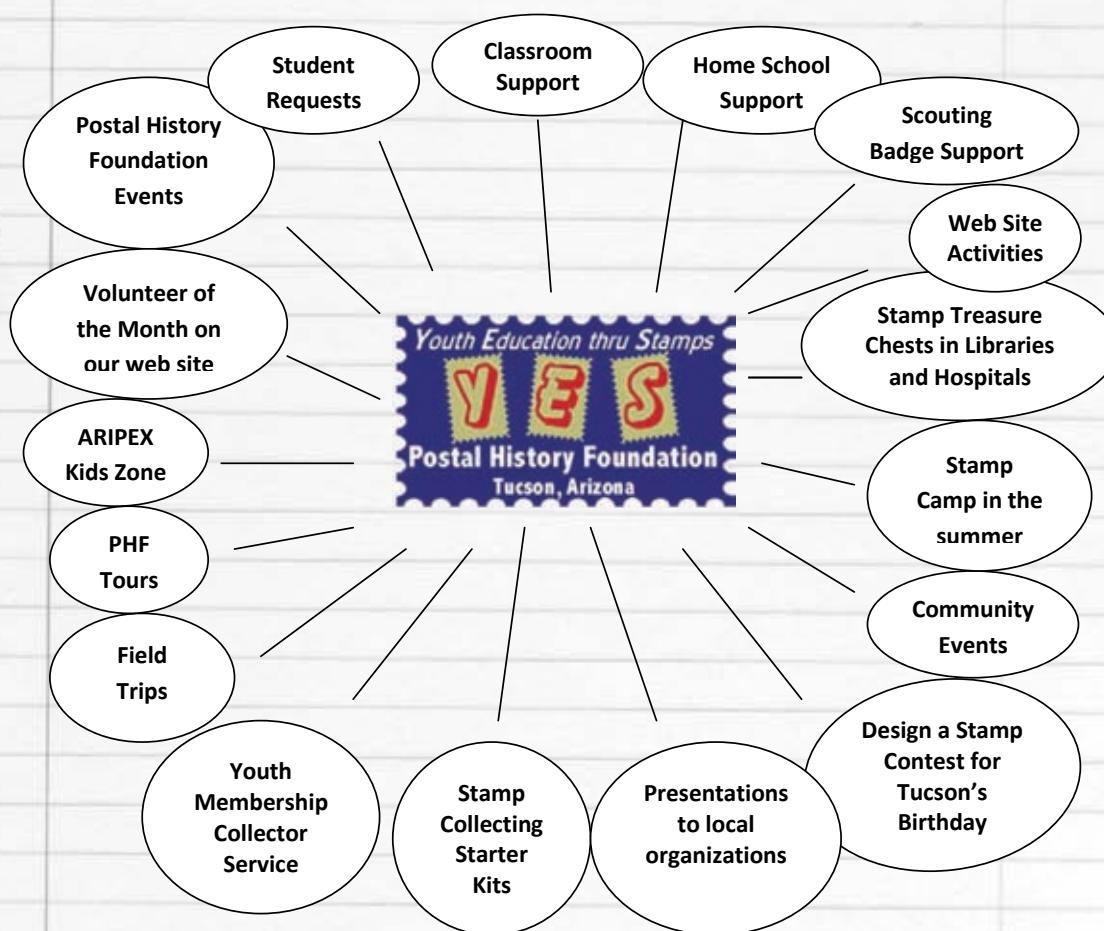
Notes From Lisa

News from Youth Education Thru Stamps

It is finally starting to cool down here in Tucson but the YES program is keeping things very warm and busy at the Postal History Foundation!

School has been in session for only two months as I write this and we have already supported over 2,100 students, teachers, and parents in and out of the classroom with stamps and educational activities. Many of the requests this year from the elementary schools have been about the basics of stamp collecting. The stamp request letters from the students are starting to arrive! Students write us all year requesting stamps to add to their stamp albums.

Below is a graphic of activities the YES program is involved in year round. We have been supporting youth locally and internationally for 40+ years. Please help us to continue to provide these educational services with a **TAX DEDUCTABLE DONATION** to the YES program!



**WE REACH OVER 8,000 CHILDREN, PARENTS, AND TEACHERS
A YEAR THROUGH THESE EDUCATIONAL ACTIVITIES!**

More From Lisa (continued on next page)

The Postal History Foundation's YES program (Youth Education thru Stamps) now has over 15 Stamp Treasure Chests out in the Tucson community. These wooden boxes are approximately 20" by 10" x 12" and were constructed by Barrett Behnke, not only an accomplished wood craftsman but also a very dedicated PHF volunteer. These Stamp Treasure Chests can hold over 5,000 stamps and are filled with a variety of United States and foreign stamps (definitives and commemoratives) to be distributed as part of educational programs. Through the Stamp Treasure Chest program the PHF can spread the word about stamp collecting among thousands of kids and families while at the same time helping children and adults to learn more about the United States and the rest of the world as well as to improve their reading, writing, and math skills.

Below is a story and photograph submitted by Frederica Leonardo-Torres, a teacher/instructor working for the Pima Count Public Library. Ms. Leonardo-Torres is a frequent visitor to the PHF where she picks out stamps and worksheets that she uses in her work for the library system. In her narration she tells how stamps are a way to facilitate literacy. Frederica has been supplying the PHF with beautiful photomurals showing how much the stamps and treasure chests are enjoyed. Thank you, Frederica for all that you do!

By Frederica Leonardo-Torres

Some of the great work with Postal History Foundation's Stamp Treasure Chest includes the following: within the Pasqua Yaqui Tribe Reservation there is project involvement at the Dr. Fernando Escalante Community Library & Resource Center. Amalia A. M. Reyes, Manager, and Oscar Hernandez, Librarian, support the Pasqua Yaqui Tribe Elders with what they need as they initiate the use of the PHF Stamp Treasure Chest. The Elders help to sort stamps, sharing their stories as they mentor youth in preserving the Pascua Yaqui culture and promoting interactive literacy skill building.

Teacher/Instructor Frederica Leonardo-Torres utilizes literacy extension activities through the Stamp Treasure Chest with the program Project LIFT (Literacy Involves Families Together), one of the programs she coordinates for the Pima County Public Library. One of the sites she works with is the Sunnyside High School and its Teen Age Parent Program led by Valla Dalrymple. Combining author Eric Carle's board books for the parent's children and using the PHF Stamp Album and its Favorite Section of author stamps she relates the stories she hears. A young Latina mother finds a rose stamp and remembers that her Nana would include her in trips to the post office. Her Nana would purchase only the flowers stamps, she recalls. She has hoped to establish a fam-

More From Lisa (continued from page 7)

ily tradition of connection by now taking her Nana and her son to the PHF and choosing their stamps together. A father of Mexican heritage sorts and categorizes his interest in Space themed stamps wondering as he shares stamp collecting with his very own son, what he will some day be interested in. The bell rings and the students want to stay longer. Leonardo-Torres creates photo murals of the PHF's Stamp Treasure Chest and the diverse experiences that it provides for the community. They are given to Lisa Dembowski as a way of thanking everyone at the PHF for these valuable literacy enhancing related materials.



Students work with stamps from the PHF Stamp Treasure Chest.



The Postal History Foundation
920 N. 1st Ave. • Tucson, AZ 85719-4818
www.postalhistoryfoundation.org • 520-623-6652

Label incorrect? Duplicate?
Please send us the corrections.

