

NEWS + NOTES

TUCSON  
STAMP CLUB

Saturday Hours  
Change

12-2 p.m. Bourse &  
Trading

2-3 p.m. Meeting &  
Program

WELCOME  
NEW  
MEMBERS!

E. Decker Adams  
Scituate, MA

Mike Bates  
Tumacacori, AZ

Guido Croveri  
Lugano, Switzerland

John Freeburg  
Ramsey, MN

Alexander Harris  
Tucson, AZ

CALENDAR

May 4- June 3	Exhibit of Space Toys and Space Age (NASA) Memorabilia from the collection of Armando Bras, in conjunction with the release of the Messenger and the Alan Shepard stamps
May 21	Tucson Stamp Club meeting 12 – 2:00 Bourse 2:00 “Stamps on Stage” by Stephen Hackney
June 7	Tucson Stamp Club Meeting 5 – 7:00 p.m. Bourse 7:00 “Machins” by Mike Wood
June 7 & Ongoing	Highlights of Civil War collection (Library Exhibit)
June 6-13	Beginner Stamp Camp
June 13-17	Advanced/Challenge Stamp Camp
July 27	“Owney” stamp release; first day issue
Aug. 1	Tucson Birthday Design a Stamp Contest deadline for entries

Gastronomique Philately

It is a little known fact that many philatelists, and those who associate with them, are connoisseurs of scones, and so, against this backdrop, a research committee was formed to determine where the most delicious scones could be obtained in Tucson. Each Friday the ladies of the committee, better known as the Scone Crones, sampled scones from various Tucson eateries. One of the ladies herself also decided to enter her homemade scones. If you are curious about the results, and would like to expand your horizons beyond philately alone, contact your editor at [lindawynn17@yahoo.com](mailto:lindawynn17@yahoo.com)

If you would like to read STAMP TRACKS in color,  
check out the website at

WWW.POSTALHISTORYFOUNDATION.ORG  
where you can view the newsletter in full color.

The PHF Family Portfolio:

Officers:

Chairman: Bob Bechtel  
Vice Chair: Paul Nelson  
Secretary: David Bernheim  
Treasurer: Bill Kohl

Staff:

Executive Assist: Lena Rogers  
Youth Ed: Lisa Dembowski  
Librarian: Charlotte Cushman  
Editor: Linda Wynn

The Postal History Foundation's

Stamp Tracks

Whole No. 16

Spring 2011

NEWS AND INFORMATION FOR PHILATELISTS OF ALL AGES

PHF Volunteer Contributes to Scotts Accuracy



Larry Daly displays one of the Djibouti stamps.

Djibouti is a small country located near the Horn of East Africa. Its postal history began as Obock just prior to the twentieth century. Over the years, many country name changes have occurred there: Obock (1892-1894) changed to French Somali Coast (1894-1967) which changed to Afars and Issas (1967-1977), and that changed to Djibouti in 1977, and remains the present name of the country. The country's early stamps are noted for their large triangular size with depictions of camels in the sandy desert.

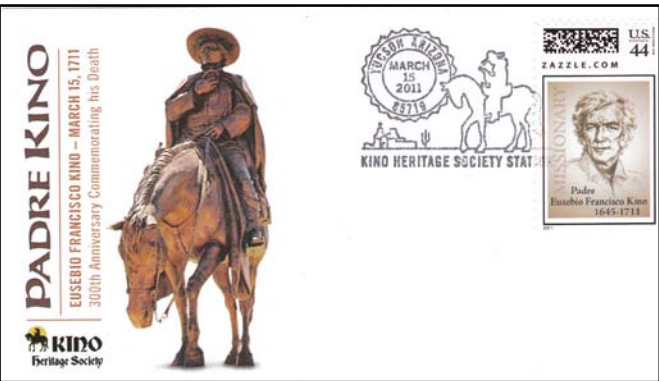
Beginning about 1992, internal tribal warfare affected postal operations so that distribution of stamps and mail outside the country dwindled to almost zero (Linn's Stamp News, 9 Feb. 2009, p. 62). In November, 2010, responding to Scotts Standard Postage Catalogue standing request for information about legitimate issues, Larry Daly sent thirteen stamps, issued over the period 1996-2008, to Scott Publishing Company. All thirteen have been duly authorized "Scott numbers", and some of their

(Continued on page 6)

Father Kino Commemorative Celebration Held Locally

March 15, 2011 marked the 300th anniversary of the death of Father Eusebio Kino and the PHF, along with the Kino Heritage Society, hosted two special events. The activities of Sunday the 13th provided an opportunity for a group of 30 Italians, most from Kino's (Chini's) birthplace in Segno, Italy, to get acquainted with people from Tucson who had been preparing for the celebrations.

On Tuesday, the 15th, the Zazzle.com privately created stamp commemorating Kino was released and placed on many cacheted envelopes created by the PHF. This was part of a larger celebration in which the Archbishop of the diocese of Trent, Monsignor Luigi Bressan participated. Flags from several nations and organizations were arrayed in the courtyard.



Cancel shows special commissioned design.

(Continued on page 6)



## Chairman’s Message

At our recent annual meeting, we honored four of our longest serving volunteers. We have two couples, Alex and Beppie Lutgen-dorf, and Eileen and Marvin Weisbard who have served as volunteers for 42 and 41 years, respectively. At first I found it hard to believe in the number of years. Time certainly has a way of compressing. Alex has been our first day issue and special cancel specialist who also creates cachets, helps design cancels, and serves with the local stamp club, which, incidentally, is a strong and consistent supporter of PHF activities. Beppie supports us by sorting stamps for mailing and placing them by value in glassine envelopes. Marvin is our computer expert, without whom we would be in serious trouble. For 41 years, Eileen has been our faithful sales specialist, and Marvin helps her by going through sales books. These four are pillars of the Postal History Foundation, and when you think of the Foundation, their names should come to mind. And through all these years, they have remained cheerful, constantly smiling and offering help to all the “newbies.” Our work isn’t just about stamps; it’s about people, and it’s people like these four who make every day here a joy.

At the board meeting, we discussed the financial and business activities of the Foundation. We were informed the library had over 3,800 visitors to its digital exhibits in March. Suggestions were made on possible funding sources and committees will look into them.

We can look over the past year as one of accomplishment. We have more volunteers than ever before, and the number of students we reach is at an all time high. Some of you may want to come and look at the educational materials our education director has created. It’s amazing how widely the subjects range and how stamps can teach and illustrate so many topics.

Robert Bechtel

## The Mystery Of The World’s First Commemorative Stamp



Issued in 1871, Scott’s number 19 of Peru is considered the world’s first commemorative stamp (see Linn’s Stamp News, April 14, 2003, p. 36). It commemorates the first railway in South America linking Chorrillos with Callao and going through Lima. It shows a vintage engine and coal car with a shield below (see stamp figure). The lettering

(Cont. next column)

and illustration are embossed. The color is red with a pale red variety listed. So far, nothing remarkable.

But when looking at the second example below the top figure, one sees the wheels on the locomotive printed in color in contrast to the embossing on the top illustration. Is this a second printing? Could it be a fake? I couldn’t get an answer from the experts. It is certainly possible since Peru has probably the greatest number of unauthorized reprints compared to other countries. And the stamp with the printed wheels is not embossed. I was also unable to find any other copy of the “printed wheels” variety. Notice also that the “I” in CINCO bleeds into the inner border above it and touches the border below as well. Is this further evidence of a fake? It is also clear that the lettering in the lower stamp is larger than the lettering in the embossed stamp. Evidence of a fake or just changes made in a reprinting? The wheel variety is also cancelled which may or may not be an indicator of authenticity.

The mystery remains. I would like to hear from any of our readers. Do any of you have or know of other copies of the “printed wheel” variety? Does anyone have evidence that this is a legitimate reprint? I eagerly await your responses. Will the world’s first commemorative remain a mystery?

Robert Bechtel  
bechtel@u.arizona.edu

## Slusser Library Civil War Collection

As our country commemorates the sesquicentennial of the American Civil War, the Postal History Foundation would like to highlight its Civil War collection. Not only did Peggy Slusser’s estate provide us with philatelic collections and funds to build the library, it also included an amazing collection of Civil War artifacts.

Volunteers have created the first inventory of over 200 items that are in the collection. Battlefield artifacts include weapons, a Union uniform cap, leather pouches worn by soldiers, a pocket prayer book, and a songbook.



Union cap thought, perhaps, to have belonged to General Sherman.

Photographs range from portraits of famous Civil War officers to unknown soldiers, some in elaborate frames, some in pocket-sized hinged cases, some in leather-bound albums, some stereoptic cards, and many loose photos. Peggy also collected original letters handwritten by General Sherman and by Sgt. Thomas Miller. The collection has almost 30 newspapers from the Civil War era, including examples of newspapers printed on wallpaper. Of course, there are philatelic items, from a replica of a sheet of Confederate stamps to commemorative stamps issued after the war. Memorial ribbons,

political campaign paraphernalia, and items related to Lincoln’s assassination round out the collection.

One of the weapons in the collection is a Rebel pike, a spear-like weapon used in wars dating back to medieval times. General Lee planned to include military units dedicated to pike-wielding soldiers, but he abandoned the plan in favor of more modern weapons.



Pike, found in Pennsylvania

Peggy was particularly interested in General William Tecumseh Sherman. The collection includes many portraits of Sherman, including several by famed Civil War photographer Matthew Brady, a button from his uniform, and some of his original handwritten letters.



Button from General Sherman’s uniform

Items on exhibit will be rotated to ensure the preservation of the collection, as well as to showcase some of its highlights. As one would expect of materials that are more than 150 years old, many of the items are very fragile. Some



Portrait of General Sherman

have suffered water damage, or have become brittle with age. The items that are in critical condition cannot be displayed until they have been restored.

The Slusser Library also has an extensive collection of more than 700 books related to the American Civil War, as well as biographies of historic figures of the era. To view the library’s Civil War holdings, see:

<http://librarycatalog.pima.gov>

Limit the search to “Postal History Foundation” in the dropdown menu.

Debra Winstead

**Are you interested in “adopting” a Civil War artifact?**

*If you would like to sponsor the restoration of a photograph, document, or other item, please contact*

*Charlotte Cushman*

**(520) 623-6652 or at:**

**[slusser.library@gmail.com](mailto:slusser.library@gmail.com)**



# Notes From Lisa

News From Youth Education Thru Stamps



Education Director - Lisa Dembowski  
ldembowski.phf@mindspring.com  
Or 520-623-6652 x 102

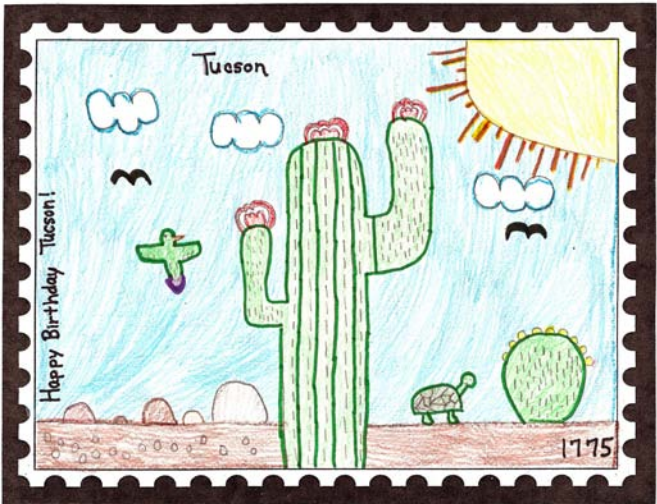
Another school year is winding down, but the education department here at the Postal History Foundation never slows down. We have upcoming events and activities for the kids to look forward to.

Summer Camp is just around the corner with two weeks planned out for Beginning and Advanced Camps from June 6th-17th. Please contact me if you have a child or grandchild who can take part in this fun camp for ages 8-13.

4th Annual Tucson Birthday Stamp Contest is coming up in August. Entry forms and stamp blank outlines are available on our website or drop by and pick up an entry packet. Last year's winner was put on a custom U.S. stamp and so will this year's winner. Entry forms are due August 1st and the Awards Party will be August 20th here in our library! The 2010 Winner designed by Rene Junius, a local second grader, is shown on the right.



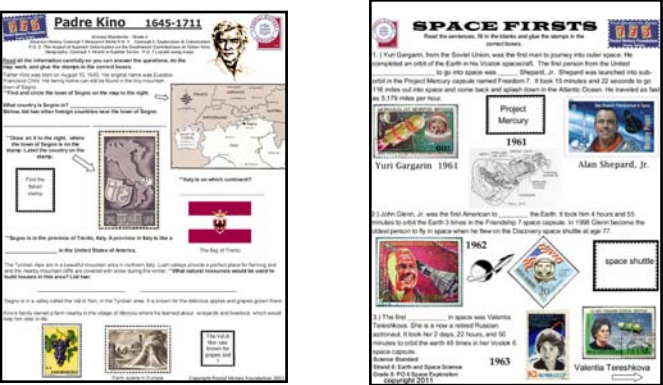
One of the PHF's youngest regular visitors might just be a future philatelist.



Winning stamp design.

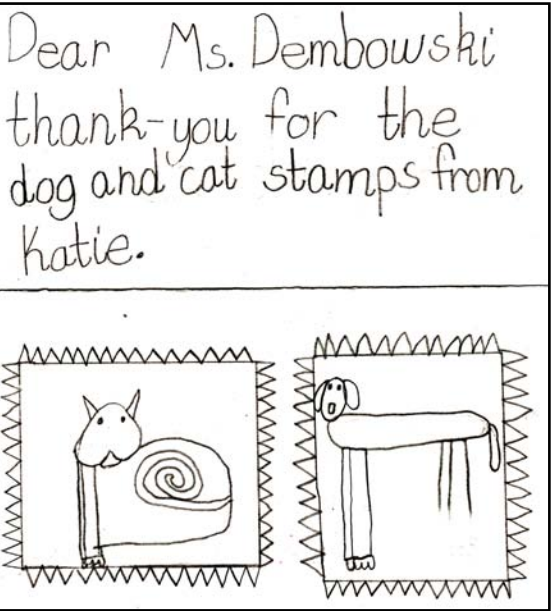
With the help of the Education Assistant, Linda Wynn, and the wonderful volunteers, I am keeping up with all of the orders and demands for lessons involving stamps which are used in the classroom locally and nationally. This year we will top off at over 10,000 students using stamps for learning in the classroom, libraries, clubs, community centers, museums, and home school families throughout the country. More students every year write us asking for stamps for their collections. This is a free service we provide for any child in the country or world. Of course we always accept donations of mint stamps or money for use as postage to help with the shipping of stamps and lessons to individual students and teachers across the country and world. Every year I am creating more lessons and PowerPoints for use by teachers and home school parents.

Recent new additions to lessons include Padre Kino, in conjunction with the 300th Anniversary of Padre Kino's death. This lesson fulfills an Arizona 4th grade history requirement. Another recent lesson just finished is a 3rd grade and above worksheet called Space Firsts which was released on the same day as our First Day of Sale celebration of the new Messenger and Alan Shepard stamp issue from the United States Postal Service. In our library we have displays from the Planetary Science Department of the University of Arizona as well as space books, novels, and vintage comic books and toys. These are on display until June 3rd. Bring your kids and grandkids to see the space toys, books and posters. One of the posters is in 3-D.



In the past three months we have visited many schools, sent lessons across the country, and participated in community events. One of the most popular events is the Tucson Festival of Books, one of the largest in the country. Held on the beautiful campus of the University of Arizona, in the Festival's children's area, the Postal History Foundation activity tent is the place to be! Every year we are becoming more popular. Teachers, parents, and children of all ages love the treasure chests and language arts lessons that we provide, such as 3, 4 & 5 letter words, action and past action words, and ABCs, numbers and colors. All these worksheets are accompanied by sets of stamps which make learning fun.

*As always we thank all of you who have contributed your time, donated stamps, and given us financial support for the education department. We can't do it without you!*



Katie's letter is one of many received from children expressing appreciation for stamps sent by the education department.

*Have a great summer!*



Parents assist their children at the PHF Y.E.S. tent at the Festival of Books.



PHF Volunteer Contributes to Scott's Accuracy (Continued)

photographs can be seen in the January 17, 2011, issue of Linn's Stamp News. Many of the known stamps issued by Djibouti during the 1992-1999 time period have not been seen by Scott; they are only known to Scott by black and white photocopies. As a result, Larry has provided Scott with more than twenty stamps for full color reproductions to replace these black and white illustrations as an aid to philatelists for quick identification in the event they ever encounter these rare items. These photos are expected to be

included in Scott's 2012 edition of Volume 2 (C-F Countries). He has also provided several more legitimate issues for Scott to assign catalogue numbers and awaits Scott's decision on these.. Larry believes there still remain legitimate issues from this period to be found and identified. He plans to continue the search.

Father Kino Commemorative Celebration Help Locally (Continued)

Representatives from the Tohono O'odham performed a tribal blessing of the event and the stamp. There was a proclamation from the Mayor of Tucson and the

Governor of Arizona, a reading of the text from the Congressional Record provided by a representative from the office of US Rep. Raul Grijalva. The representative from Gabrielle Giffords' office spoke followed by words from the Consul General of Italy and the Consul of Mexico. Throughout the days of preparation and celebration, much information was made available about Father Kino, his explorations, and why his presence in the Pimeria Alta (now Northern Sonora and Southern Arizona) made such a mark on history in this region.

Paul Nelson

Watch our newsletters, the PHF web site, and other forms of communication for information about an upcoming **golf tournament** to be sponsored by the **Postal History Foundation**

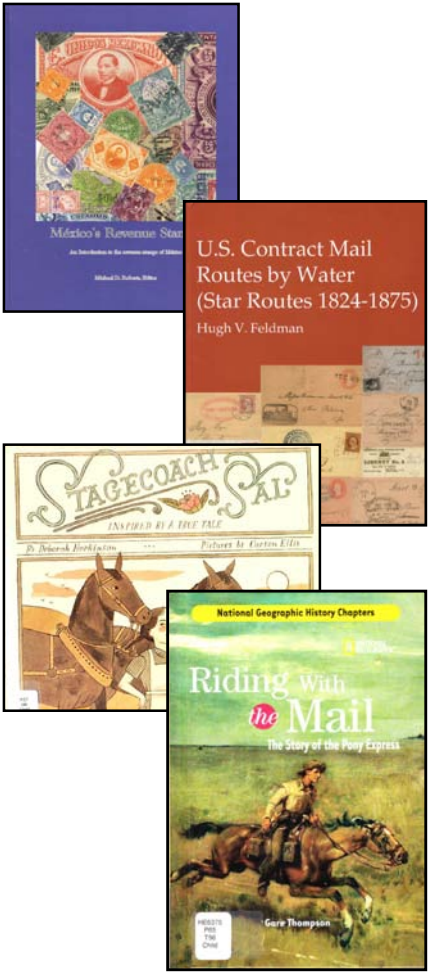
New Books

The library is grateful to have received a generous donation of new books from the Collectors Club of Chicago this quarter. Other new titles include the following:

- Early Air Mail of Haiti - Peter C. Jeannopoulos (2010)
- Hebert's Reference Guide of Plate Number Singles (2011)
- Mexico's Revenue Stamps: An Introduction to the revenue stamps of Mexico Michael D. Roberts, Ed. (2011)
- Ten-Cent 1869 Covers: A Postal Historical Survey - Michael Laurence (2010)
- U.S. Contract Mail Routes by Water (Star Routes 1824-1875) Hugh Feldman (2008)

Children:

- Stagecoach Sal: Inspired by a True Tale - Deborah Hopkinson (2009) Young Sal makes a stagecoach journey alone to deliver the mail.
- Riding with the mail : the story of the Pony Express - Gare Thompson (2007)
- The Very Hungry Caterpillar - by Eric Carle (1987). This book has a stamp to match!
- Ben Franklin: Printer, Author, Inventor, Politician / Pamela Rushby (2007)



Mule Train Mail

If you find yourself complaining about the price of stamps, you might be interested to find out about mail delivery to one of the most remote locations in the continental United States. In northern Arizona, the town of Supai still depends on a daily mule train to deliver their mail, and theirs is the only post office still served by packhorse and mule. Located at the base of the Grand Canyon, at a distance of 8 miles from the rim, with an altitude change of more than 3,000 feet, Supai is home to the Havasupai tribe. Havasupai means "People of the blue-green water", and there are currently approximately 500 tribal members living in the village.



Supai Post Office sign.

Through a contract with the U.S. government, Charlie Chamberlain and his son, Brian, are responsible for the delivery of the mail along this route every Monday through Friday. Although he himself is not of Havasupai origin, Charlie has been married to tribal member, Agnes, for more than 42 years. After more than 22 years on the job, Charlie explains that is not just a job, but rather a way of life. When Charlie retires, Brian plans to take over.

The mail truck comes daily from Peach Springs, which is 66 miles west of Hualapai Hilltop at the rim of the canyon. Although helicopters transport some goods, the mule train is more reliable, given the fluctuations in the weather and frequent high winds. When asked about the scariest moment in his career, Charlie described a flash flood during which he realized that the water was soon to be over his head. "I thought it was time to meet my maker," he remembers. At first he thought he would have to get off and abandon the mule train, but he

was able to get them all safely to higher ground. He waited there for 3 hours until the water receded, and was then able to make it down, even though it was tough going. He didn't get back home until 9:00 that night. In the snow the mule train sometimes slides backwards, especially when it is icy, and mules have been known to fall off the edge of the trail. In recent years the canyon has been closed to outsiders for long periods because of severe damage following this type of flood. During pleasant weather, many hikers share the trail with Charlie and the pack trains, and this can be dangerous for the mules, as well as for the tourists.

Much of the mail is food, including frozen foods, milk, and even eggs. When asked about the strangest thing he ever saw transported, Billy Wescogame laughingly responded that he once saw a big rock doorstep fall out of a pack. The mule train has carried building supplies, furniture, and appliances. Billy explains that mules are like four-wheel drive and are much stronger than horses. He reports that they can work for up to twenty years.

The residents of this remote village eagerly await the arrival of the mail each day. In this beautiful and peaceful place, there are no paved roads and no cars. While satellite and the internet connect Supai more closely now than they were in the past, nevertheless the mule train mail is a real lifeline to the outside world.



Charlie and Brian load chocolate milk on the mule train which also is carrying mail to the Supai.



With mail and supplies loaded, Brian is ready to begin the journey into the Grand Canyon.

Charlotte Cushman