



The Postal History Foundation



Stamp Tracks

Whole No. 24

Winter 2015

NEWS AND INFORMATION FOR PHILATELISTS OF ALL AGES

Students Celebrate Rudolph with the USPS



Light bulbs flashed and students cheered as the new Rudolph stamp was unveiled here at the Postal History Foundation. Tucson Postmaster Don Grigel spread holiday cheer by asking Academy of Tucson student Oliver Seagraves to help unveil the new Rudolph stamp. Postmaster Grigel presented Oliver with a United States Postal Service cap to remember the special day.

During the field trip, students wrote a note in a holiday card, addressed the envelope, and created

Continued on page 6

Left to right: Lisa Dembowski, Oliver Seagraves, and Carl Grigel

Local Member Wins Single Frame Grand Award

John Wynns, PHF member, volunteer, and Arizona Philatelic Ranger, won two exhibit awards at Stamp Exposition of Southern California (SESCAL) 2014. John has collected Peru for the past five years and is a member of the Peru Philatelic Study Circle. His first single frame exhibit about Peru's 1897 Lima Post Office issue of three stamps has received three Gold metal awards since 2012.

In 2012, he started a new single frame exhibit titled "Peru's 12 Centavos Issue of 1905," which won a Gold in 2013 and the SESCAL 2014 Gold and Single Frame Grand Award. This grand award exhibit will be in the Ameristamp Expo 2015 Champions of Champion section in February at the Riverside Convention Center (California). It will compete with 30 other single frame grand award winners.



John Wynns receiving the Single Frame Grand Award from chairman Jean Kasper.



The 12 centavos stamp of 1905, shown left, was the first Universal Postal Union (UPU) rate revision of the 20th century of any country. The UPU required member nations to reduce their international single weight (15 grams, or about ½ ounce) rate. In January 1905, Peru's rate was reduced from 22 centavos to 12 centavos until it was demonetized in December 1909. This stamp was printed by the American Bank Note Company of New York, which designed and printed most of Latin America's stamps in the 19th and 20th centuries.

920 North First Avenue, Tucson, AZ 85719 • www.postalhistoryfoundation.org
Phone: 520-623-6652 • Hours: M-F 8 a.m. - 3 p.m.

Chairman's Message

Last weekend I went with my Boy Scout troop to Mount Lemmon for a camping trip in the snow. We pitched our tents, and the scouts found just enough snow for snow ball fights and building a fort.

Since it was warm and the snow was melting fast, most of the wood was quite damp. This was a perfect opportunity to practice building a fire, which all the boys KNEW how to do! Two hours and two boxes of matches later, the scouts gave up. The wood was just too wet and the Scoutmaster (me) would not let the boys use any paper (or gasoline) to help start the fire.

I then showed the boys how to start a fire with really wet wood. It took another 45 minutes to get the fire going, and two more hours before we had enough coals to roast our marshmallows for smores.

I can relate this to stamp collecting, really! Just as learning to build a fire for the first time requires perseverance, so does philately. First, materials need to be gathered. Finding a space or room to work on and store your materials is next. Many collectors stop there. They become accumulators. I did this for a long time. The final (but never ending) part is the COLLECTION. Actually *collecting* stamps or postal history takes the most time and persistence because the collector must painstakingly research countries, topics, or issues. The stamp collector must also patiently search... and wait... for stamps or other philatelic items to fill gaps in his or her collection. This is also the most gratifying part of collecting.

So never give up and keep being a mentor to your fellow collectors to help them achieve that warm inner glow that comes with collecting or enjoying a camp fire.

Bob Davis

ARIPEX 2015

A World Series of Philately Show

at the Mesa Convention Center

**Drop by the Postal History
Foundation table at ARIPEX this
February 20-22**

Show Theme:

**Native American Artists of the
Southwest**

Dealers, Exhibits,
Youth Area, Awards Banquet

263 N. Center Street Mesa, Arizona 85201

Great Deals in the Sales Department!

Used Albums First Day Covers RPO Covers
Used Stock Sheets Topical Packets Album Binders
Stock Books Bulk Foreign by the pound First Flights
Album Pages Mounts

520-623-6652

PHF Expands Online Presence

Our website is designed to serve as an information portal. Whether you want to know about our programs, events, library holdings, items for sale, how to donate and become a member, or just want to know when we're open, the www.postalhistoryfoundation.org website has what you're looking for. Our front page tells you, at a glance, the latest news and events of the PHF and the rest of the philatelic world. Click on any department to find out more about our many services. And if you need any help, we have ways to get in touch with us on our Contact Us page.



If you like to Facebook or tweet on Twitter, please consider liking our Facebook page at [/postalhistoryfoundation](https://www.facebook.com/postalhistoryfoundation) and following us on Twitter under our handle [@phftucson](https://twitter.com/phftucson). We normally post or tweet once a day, often with images of stamps or cachets that relate to "this day in history." We also remind followers of upcoming PHF events and other news items. Please also let family and friends know about us online. Hope to see you there!

Cachets Celebrate Three Rudolph Anniversaries

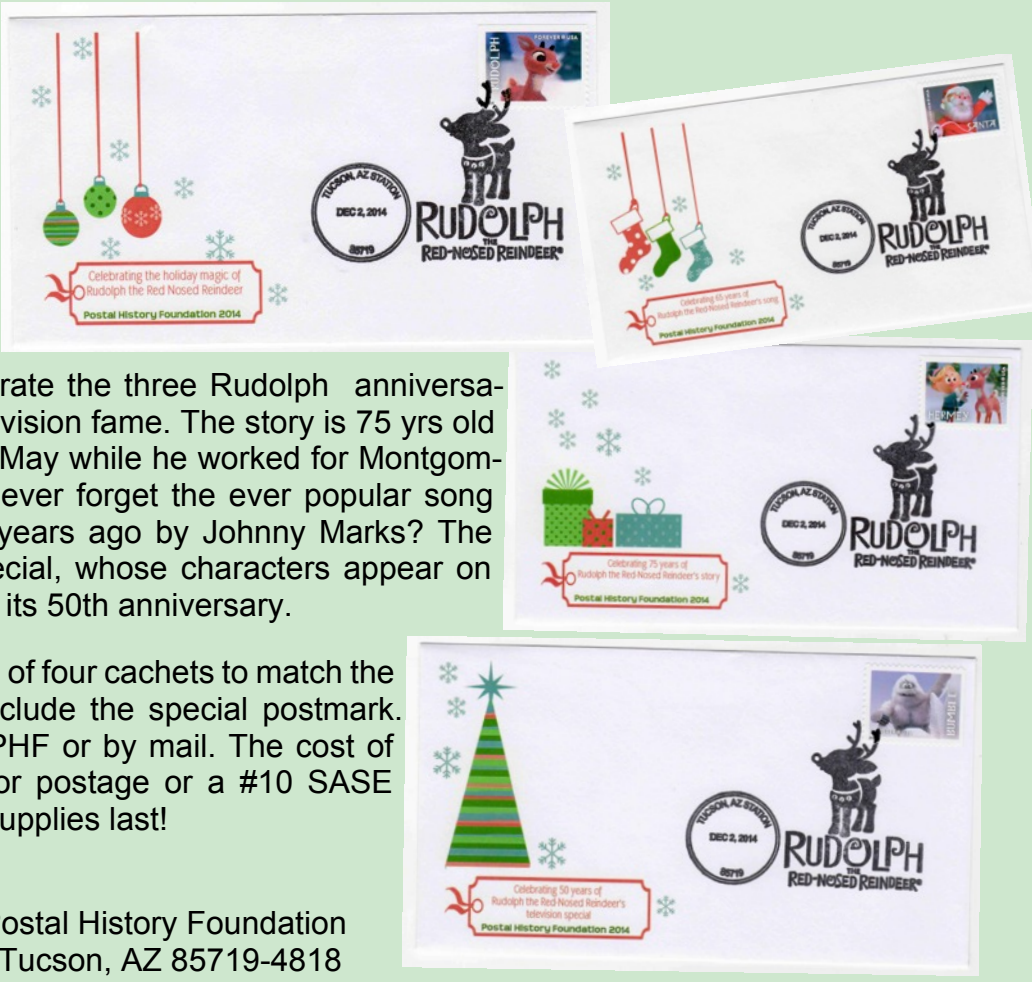
The Postal History Foundation created special cachets for the 2015 Rudolph the Red-Nosed Reindeer United States Postal Service stamp issue.

Slusser librarian, Valerie Kittell, designed these lovely cachets to commemorate the three Rudolph anniversaries of story, song, and television fame. The story is 75 yrs old and was written by Robert May while he worked for Montgomery Ward. And who could ever forget the ever popular song about Rudolph written 65 years ago by Johnny Marks? The Rankin/Bass television special, whose characters appear on the stamps, just celebrated its 50th anniversary.

The designs are sold in sets of four cachets to match the four issued stamps and include the special postmark. They are available at the PHF or by mail. The cost of each set is \$6 plus 50¢ for postage or a #10 SASE envelope. Available while supplies last!

Send orders with check to:

Attn: Alex Lutgendorf, Postal History Foundation
920 N. First Ave. Tucson, AZ 85719-4818



Get Your Mint Plate Blocks & Sheets Here!

Our sales department is overflowing with mint plate blocks and sheets.

- Plate blocks starting with Scott #650 are available for approximately 50% of Scott Catalogue value (but none less than 25¢).
- Sheets start at Scott #772 and are also priced at about 50% of Scott.

Contact: Bill Kohl at 520-623-6652 x103 or phftucson@comcast.net



Member in Good Standing?

Basic PHF Membership is good for a calendar year. If your mailing label shows **2015**, you are current and "in good standing". If not, please renew and update your membership.

Beyond Basic Membership?

Many of you have provided generous gifts beyond basic membership. Please consider a contribution at the "Friend" level and above. All gifts support the PHF and its programs.

Visit "How to Help" on our website to renew membership or beyond!

Thank You!

www.postalhistoryfoundation.org

My Passion for Naval Covers by Stewart B. Milstein

My special interest in naval covers began when my cousin, Arnold Seltzer, a WW II veteran and an employee at the New York (Brooklyn) Navy Yard, gave me a cover from the “shakedown cruise” (a newly commissioned ship put out to sea for the first time) of a US Navy destroyer. He told me how I could write to the ship’s postal clerk and get mail canceled with the ship’s postmark. About this same time, the early 1960s, it was possible to get covers postmarked and cacheted from the ships that comprised the recovery fleets for the Mercury and Gemini space programs.

I joined the Universal Ship Cancellation Society (www.uscs.org) in the mid-1960s, and my naval cover collection has grown to over 10,000 pieces. It is small compared to others’, as I specialize only in combat ships.

The philatelic history of a ship consists of covers in the following sequence:

1. A keel laying cover canceled in the city where the ship is being built.
2. A launch cover canceled in the city where the ship was christened.
3. A cover bearing the date of the ship’s First Day of Postal Service.
4. A ship canceled cover with the date of First Sea Trial.
5. A First Day in Commission cover with the ship’s postmark.
6. A Last Day of Postal Service ship canceled cover.
7. A Last Day in Commission cover with the postmark from the location where the ship was decommissioned.



This First Day in Commission cover was sent by my cousin, Arnold, to his brother Alex who lived in the Bronx. On the date the cover was postmarked, Arnold was still living in NY. He had purchased the cover from someone who serviced different events in a ship’s history. This is still a common procedure for acquiring ship covers. The US Navy announces the date of significant events in a ship’s history far enough in advance to allow cachet makers and collectors to prepare covers for the event. Often the builder will produce cachet covers for their employees as well as the guests who attend the ceremony.



Early naval cover collecting placed a premium on a good cancel. Sometime in the late 1930s, the quality of the cachet became as important as the quality of the cancel. Today, a quality cachet, as pictured above, carries more importance than a good cancel. The cachet will often note events, deployment information, or anything else that the cachet maker wishes to bring to the attention of the collector.

This cover has an event in the killer bars. Though seldom seen today, in the 1930s and 1940s, the navy postal clerk would insert the ship’s geographic location, an event, or deployment information in the killer bars, allowing a collector to trace the history of the ship.

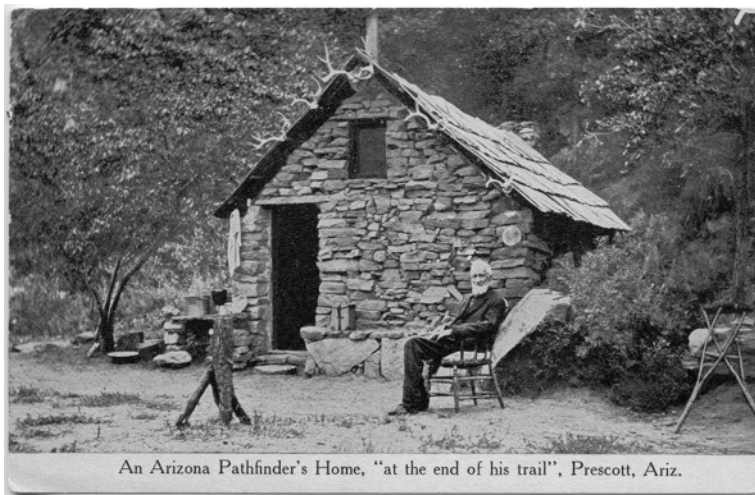
Seventy-three years after it was canceled, I discovered this same cover in a lot that was given to me to sell. I bought the cover and sent it to Alex’s son. The full story behind this cover is in the USCS LOG, which is on file in the Slusser Library.

Though I have been a lifetime collector of stamps, my passion remains naval covers. Whether the ship is a currently active naval vessel, or one that has been decommissioned, I want to have a cover from that ship if it will fill a hole in my collection. Collectors will not be surprised to learn that I have a want list, and no matter how many covers I delete from my list, it never seems to get any shorter.

Exhibit Shows Hardships and Resourcefulness of Early Miners

"Another week gone and no newsman yet. These months—years perhaps—will to a certain extent be a blank to us. We know nothing of what is going on the states... in fact I shall be a kind of Rip van Winkle & it will require the first ten years after returning to learn what has taken place while away" (1849 letter cited in James W. Milgram's *The Western Mails*).

The text of this letter, which opens the second annual showing of the *Mining and the Mail* exhibit in the Slusser



Library, sets the stage for the variety of covers, picture postcards, maps, and photographs that demonstrate the isolation, but also the resourcefulness, of the early miners. Containing materials never before exhibited, *Mining and the Mail* explains the origins of the early stage lines, the Pony Express, and the various methods enterprising people used to deliver the mail.

The exhibit runs concurrently with the Tucson Gem and Mineral Show. We invite you to come in, travel back in time to visit the old miners and discover why they could sing, "I often think of writing home, but very seldom write. A letter now and then I get, which fills me with delight" (from "I Often Think of Writing Home," in *Put's Golden Songster*).

New Literature Highlights

- *United States Air Force Postal Meters: History and Usages* by Joel A. Hawkins
- *Sakura Nihon Kitte Katarogu* = Sakura Catalogue of Japanese Stamps
- *Arizona Then and Now* by Allen A. Dutton
- *Mail Me Art: Going Postal With the World's Best Illustrators and Designers* by Darren Di Lieto
- *Off Like the Wind! The First Ride of the Pony Express* by Michael P. Spradlin; paintings by Layne Johnson
- *Patagonia Arizona* by Stan Benjamin

For more information about our new arrivals, click on "Find out what's new at the Slusser" on the library page of our web site.

Sales Department Specials

US Year Sets 1972 to recent - Discounted Prices

US Booklets - #75 Scott #632 to recent dates

Foreign Platinum Mines - \$135 14oz off paper
Scott values from 50¢ to \$9.99



Gold Mines - \$75
Lower Values
14oz off paper

Our sales department is available by calling 520-623-6652 or sales@phftucson.

Education Notes *Lisa Dembowski* education@phftucson.org or 520-623-6652 x 102

Continued from page 1

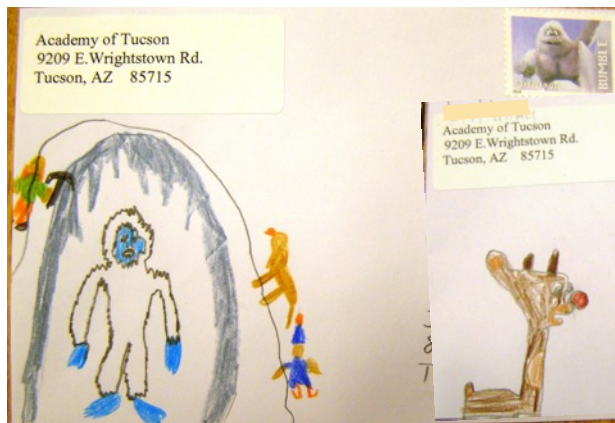
a cachet by drawing a picture to complement one of the four stamp designs in the Rudolph set.

After the letters and notes were completed, they walked to our contract post office and had their envelope postmarked with the special USPS Rudolph postmark, pictured above.



Volunteer Jim Kelly postmarking Oliver's envelope.

The students are amazingly creative. Below are some examples of the cachets they designed for their envelopes, prior to cancellation.



P.O. Box Banks



Bank boxes with circa 1906 Hereford, Arizona post office box doors are still available for sale. Volunteer Barrett Benhke constructs the boxes from pine wood. Each box has a working combination and a coin slot in the back.

Size - 6½ x 5 x 5"

\$42 each. Shipping and Handling is \$15

Call Lena at 520-623-6652

Volunteer Spotlight

The PHF acknowledges Don Schroeder for ten years of volunteering service. Don, also a Tucson Stamp Club member, is in charge of sorting definitive postage stamps. Using our unique sorting trays (pictured below), Don separates the definitives by denomination, which are later sold to benefit the foundation or used by our education department in the classroom. Thank you, Don!



For the Love of Philately by Lisa Dembowski

When I think about the extraordinary philatelic history of Sue Sisson, I think of a person who is extremely dedicated and driven to share her love of philately with the children of the world.

Sue Sisson is, without a doubt, responsible for exciting more kids about philately than anyone else across this country over the past 50 years. Her enthusiasm for working with students of all ages is completely unequaled.

Since the 1960s, Sue has been involved in public, private, charter, community, and senior education in Arizona, other states, and foreign countries. She has made a philatelic imprint on Arizona children in Tucson, Glendale, Phoenix, White River, and the Show Low communities. Throughout her teaching career, she incorporated stamps into her curriculum by creating lessons and supplying students with stamps from the PHF. She introduces stamps to children anywhere and everywhere, including libraries, scout meetings, campgrounds, museums, and community and senior centers. It is estimated that Sue has personally worked with more than 20,000 students throughout the years, teaching them the enjoyment of stamp collecting. Many young people have

learned about philatelic exhibiting from Sue and have competed and won medals in local, state (ARIPEX), regional and National shows. One of her students won four national and three international first place awards.

She has been, and continues to be, an integral part of the youth area at ARIPEX shows since the 1970s.

Sue has been a Arizona Philatelic Ranger for over 25 years and was inducted into the Philatelic Hall of Fame at ARIPEX 2006. Throughout the years, Sue herself has collected and exhibited. She recently designed three covers, a stamp, and postmark for the Show Low 50 year incorporation celebration.



Today, in her retirement, she is in charge of the Show Low Branch of our Youth Education Thru Stamps program. Sue works with several local schools in the White Mountains, the Show Low Museum, local state parks, and the youth area at ARIPEX in Mesa, AZ. Sue also serves on the Board of Directors of the PHF.

When I go into schools today, principals, teachers, and young parents fondly remember “Miss Sue, the Stamp Lady” from their past. Some of them even remember her mother, Phylis Ashwood, who, along with other retired teachers, helped to start our classroom educational component here at the PHF back in in the 1960s. Her work has spread across many generations.

Now, I am called the “stamp lady” by thousands of students in Tucson, and with the incorporation of computers and the Internet, we are able to spread the love of philately to even more students, teachers, and adults than ever before across the world.

Sue, with her boundless energy, continues to be an inspiration to us all in our mission to cultivate an appreciation for philately.

Thank you, Sue Sisson.



New Members!

Martin Brooks
Tucson, AZ

Harvey Kivel
Tucson, AZ

Jack Mount
Tucson, AZ

Robert Packowski,
New Orleans, LA

Ryan Pat,
Tucson, AZ

Max Schwartz
Tucson, AZ

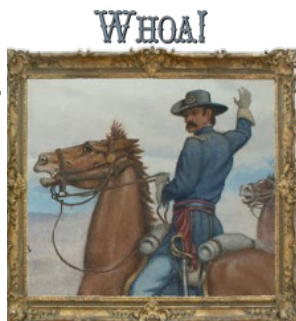
Alan Severn
Colorado Springs, CO

Kenneth Shotwell,
Monroe, WA

Slusser Library Guide for Sale

Ever wonder how Arizona got
it's shape?

Hear about
**T h r e e -
Fingered
Jack, and
why he
was shot
in the gut?**



Discover
the history behind all the Slusser
Library paintings in *Framing
History*, by librarian Valerie Kittell.

Available for \$10 including postcards
of the paintings, or \$5 without, plus
shipping.

Contact Valerie at
library@phftucson.org

or 520-623-6652 x107.

Tucson Stamp Club

First Tuesdays - 5 pm bourse
Third Saturdays - 12 pm bourse

February 21
No meeting - ARIPEX

March 3
"Maritime Aspects of the
Holocaust" - Stewart Milstein

March 21
"Farleys" - Michael Timko

April 7
Desert Flowers clothesline

May 5th
Mexican stamps clothesline

May 16th
Desert animals topicals
clothesline

July 7
Patriotic topicals clothesline

July 18
Medical topicals clothesline

August 4
Crops & harvest clothesline

PHF Family Portfolio

Officers:

Chairman: Bob Davis
Vice Chair: Bill Kohl
Secretary: Ron Newman
Treasurer: Ted Maynard

Staff:

Executive Assistant:
Lena Rogers
Youth Education Director:
Lisa Dembowski
Librarian: Valerie Kittell
Education Asst.: Linda Wynn

See past issues of Stamp Tracks
at
www.postalhistoryfoundation.org

PHF Calendar

January - March
SLUSSER EXHIBIT
Mining and the Mail

February 8
Post Card Exchange Club

February 13
Civil War Round Table

February 20-22
ARIPEX in Mesa, AZ

February 27th
Scout Merit Badge Workshop

March 8
Post Card Exchange Club

March 13
Civil War Round Table

March 20
Scout Merit Badge Workshop

April
Future **SLUSSER EXHIBIT**
Civil War and Lincoln

April 10
Civil War Round Table

April 12
Post Card Exchange Club

April 18
PHF
Annual Luncheon and
Board Meeting for
members and volunteers

Civil War Round Table?

Contact
Bob Burdick at
bobandglendaburdick@q.com