

# The Postal History Foundation



## Stamp Tracks

Whole No. 25

Summer 2015

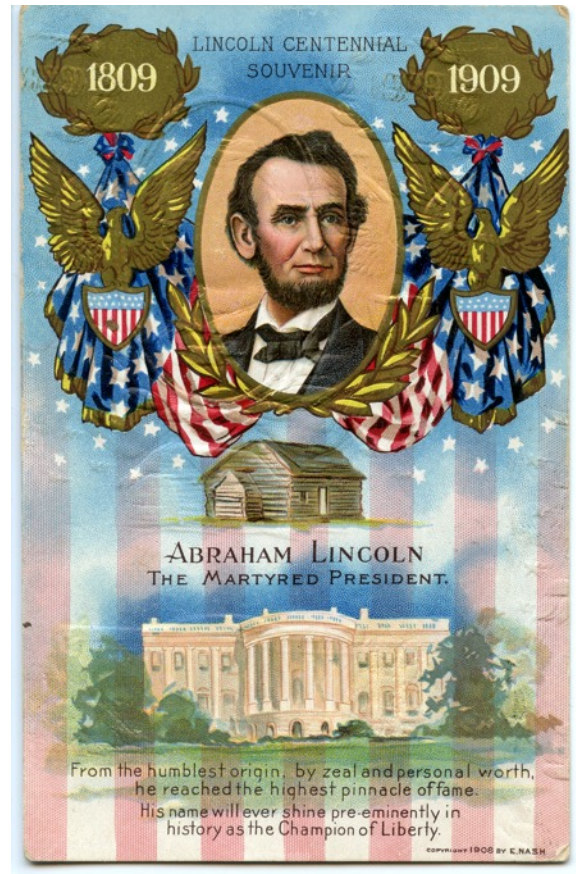
---

*NEWS AND INFORMATION FOR PHILATELISTS OF ALL AGES*

---

### Oh, What a Price to Pay!

In recognition of the sesquicentennial anniversary of the end of the Civil War, the Slusser Library takes an unflinching look at the bloodiest war in American history. The current exhibit, which will run throughout the summer and into the fall, uses philatelic and historic material along a timeline of significant battles to tell the story of the tremendous cost of war. The casualty reports for each battle include the dead, missing, captured, wounded, and ill. Sources for the numbers come from the PBS American Experience film, *Death and the Civil War* and the Civil War Trust. Materials in the exhibit case include the United States Postal Service's Civil War recently released souvenir sheets, photographs, soldier's shaving cups, sewing kits, and prayer books, accounts from eyewitnesses, and Civil War envelopes from the Thomas Hale collection here at the Slusser -- mint covers produced in the Union as patriotic propaganda. The exhibit concludes with memorabilia from the assassination of Abraham Lincoln. Please come down and experience why Ulysses S. Grant said, the Civil War "was a fearful lesson, and should teach us the necessity of avoiding wars in the future."



### "Take the PHF Train"

By Kenneth Shotwell

#### DEPARTURES

I only learned about The Postal History Foundation a couple of years ago, but my timing was lucky, since I'd started looking for a loving home for my collection. As a former school teacher, I'd hoped to put it in the hands of a young person, however thin it might be. I started it when I was eight but I'm not being modest when I call the collection modest. But it still told beautiful stories that could teach, and unlike anything inside a modern child's digital bubble, stamps can be experienced with all five senses (but hopefully with just two!). My collection was also a sort of legacy. Not only my own, but those of the two family members who handed down their own collections to me so many years ago. The oldest of those - my dad's - had been started in the 1930s, when he was ten.

*Continued on page 4*

920 North First Avenue, Tucson, AZ 85719 • [www.postalhistoryfoundation.org](http://www.postalhistoryfoundation.org)  
Phone: 520-623-6652 • Hours: M-F 8 a.m. - 3 p.m.

## Chairman's Message

The PHF had its regular table at the ARIPEX stamp show in Mesa, AZ. Participation was good and we saw many of our friends as they stopped by to purchase covers and collections. We are grateful to all who purchased from us as the monies collected help us with our outreach to children through the Youth Education thru Stamps (YES) program.

Additionally we participated in the youth area with treasure chests and lots of stamps to give away. Marsha Condit and Sue Sisson did a wonderful job organizing the youth area and Sue helped 70 scouts earned their Stamp Collecting Merit Badge during ARIPEX.

While we sold a good quantity of stamps and supplies, our cars were full on the return trip to Tucson with the many donations left with us at the PHF table. These donations will support our efforts to provide stamps for students and collectors of all ages across the country and around the world.

We plan to attend the next ARIPEX in Mesa in 2016. If any of you are interested in helping out at the 2017 ARIPEX, please leave a message for me at PHF and I will get back to you. We will need lots of volunteers if we expect ARIPEX to return to Tucson in the future.

*Bob Davis*

### Sales Department Specials

**US Year Sets** 1972 to recent - Discounted Prices

**US Booklets** - #75 Scott to present

**Foreign Platinum Mines** -  
\$135 14.8 oz off paper.  
Scott values from  
50¢ to \$9.99

**Gold Mines** - \$75  
Lower Values  
14.8 oz off paper

**Mint Postage** available at  
a 40% discount. Save on  
your mailing costs.

Our Sales department is available by calling 520-623-6652 or [sales@phftucson.org](mailto:sales@phftucson.org)

#### ALSO AVAILABLE:

RPO Covers	Used Scott
Topical Packets	Catalogues
Used Albums	Sets or Individual
First Day Covers	Stock Books
Mounts	First Flights
Bulk Foreign	Album Binders
Used Stock Sheets	



### Thank You Members!

**Thank you** to all who started or renewed your membership for 2015! (Check your mailing label) For those who decided to lapse your membership, we wish you a happy philatelic summer.... BUT please rejoin our select membership who believe in supporting the PHF programs that promote philately to youth of all ages.

Better yet go....

### Beyond Basic Membership

Many of you have provided generous gifts beyond basic membership, which allow us to continue and expand our efforts to reach more youth and support our philatelic library. Please consider a contribution at the "Friend" level and above. If a lifetime of philately has treated you well, consider a legacy gift to move that amazing experience along to the next generations.

**Visit "How to Help" on our website to renew membership or beyond!**



**Follow the PHF on  
Facebook and Twitter!**

[facebook.com/postalhistoryfoundation](https://facebook.com/postalhistoryfoundation)

@phftucson



# National Park Retiree Connects with Postal History

*Parks, Postmarks & Postmasters: Post Offices Within the National Park System*

by Paul R. Lee.

251 pages: color illustrations, tables; 28 cm, paperback.

Published 2014 by Rocky Mountain Philatelic Library in Denver, Colorado.

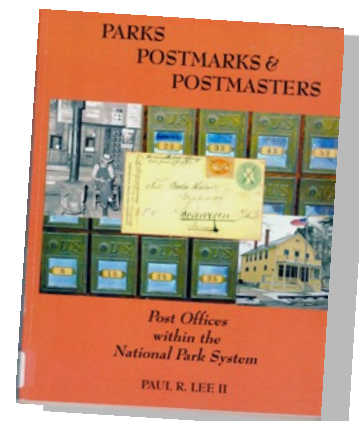
<http://www.rmpldenver.com/publications.do>

When Rocky Mountain Philatelic Library (RMPL) volunteer Paul R. Lee II, also a retired employee of the National Park Service (NPS), was asked how many post offices were in the National Park system, the quest began. His study began with creating a list of the current post offices, but expanded to include former post offices as well. That study resulted in the publication of this book, which examines over three hundred post offices in one hundred ten parks.

Lee's philatelic background and some forty years' service in the NPS, on both the mainland and offshore states and territories, served him well in the research and compilation of this book. He examines each park separately by giving a brief general history of the park, the post office within the park, and a list of postmasters with date appointed. Nearly every page includes images, many of them full-color, of postmarked covers, portraits of postmasters, snapshots of post office exteriors, and miscellaneous memorabilia. Parks are arranged alphabetically in sections corresponding to each beginning letter, and an index helpfully guides readers to post offices that bear names different from the park it was established in. Notes found at the end of each section detail the sources, and an extensive bibliography is listed in the back. For readers interested in a particular state, the page before the index lists them in that way, as well.

PHF members may be interested in the list of the names of contributors of information that includes several PHF members and friends. Primary among these are Marjorie J. Sente of Prescott, who has a notable collection of Grand Canyon National Park philatelic material; Kristian Wang of Salt Lake City, who has an important collection of Yellowstone National Park philatelic material; the late Don Garate, historian at Tumacácori National Historical Park; Peter Martin, editor of the postal history journal *La Posta*, and many members of the RMPL in Denver.

Not only will philatelists and postal historians find Lee's book interesting, but the general reader as well. The PHF is pleased to have this book in our holdings.



**Get Your  
Mint Plate  
Blocks  
& Sheets  
Here!**

- Plate blocks starting with Scott #650 are available for approximately 50% of Scott Catalogue value (but none less than 25¢).
- Sheets start at Scott #772 and are also priced at about 50% of Scott.

**Contact: Bill Kohl at 520-623-6652 x103 or [phftucson@comcast.net](mailto:phftucson@comcast.net)**

## STAMPS by the POUND

**Worldwide  
Mixture  
OR  
Individual  
Countries**

**Prices Vary**



**Many countries to choose from.  
Call for availability.**

**520-623-6652**

**FREE DOMESTIC SHIPPING!**



*"Take the PHF Train" Continued from front page*

Without kids of my own to whom I could bestow it, I'd already thrown myself on the mercy of friends and family for a likely recipient. That proved a dead-end, until a collector friend mentioned a museum in Tucson dedicated to sharing knowledge about stamps. The prospect of turning over the keys to my collection put a lump in my throat, but once I'd spoken to PHF volunteers, the decision was easy. While I was retiring from collecting, my collection would continue on to new destinations and better uses.

### ARRIVALS



Kenneth Shotwell

Fast forward to Fall 2014. Planning a visit to the southwest from my residence near Seattle, I chose to go by train. The Sunset Limited - the oldest continuously operated passenger rail service in the United States - stops at Tucson's territorial-style railway station on its way between New Orleans and L.A. My collector-friend met me on the platform, and after an obligatory plate of huevos rancheros, we motored the short distance to PHF.

Within a few minutes, we'd been welcomed aboard for an impromptu, guided tour of the museum offered by PHF board member Ted Maynard. My favorite stop was a display of winning entries in the annual stamp design contest organized by PHF for area children. Stamp designs honor Tucson's birthday, and the grand prize winner sees her or his design turned into a real US postage stamp.

The Slusser Library, adjacent to the museum, was our final stop. The most prominent exhibit at that time featured railway postmarks in Arizona and New Mexico, including a map of each line and station. PHF's librarian, Valerie Kittell, issued us open tickets to view anything in the collection, whether on display or not.

Having been born in New Mexico, in a town that no longer exists, I wondered aloud whether their collections included any railway or non-railway covers from Santa Rita, in Grant County. Santa Rita was at the end of a rail spur used to get ore from the ancient open pit copper mine nearby - a mine that was started in prehistory, and that eventually swallowed the hospital I was delivered in, as well as both my maternal and paternal grandparents' houses, and finally the entire town, including its post office.

No sooner had my question been asked than Valerie disappeared into the archives. When she returned, she handed me a folder with seven covers postmarked at the Santa Rita Post Office. They ranged from the early 1930s to the mid 60s. My mail hook caught on a cover from 1931, addressed to the Tucson Chamber of Commerce. The sender was my great-uncle! W.W. Cross had married one of my dad's aunts, and featured prominently in stories I'd heard during childhood. He'd ridden into the sunset way before I was born, yet here he was now, waving at me from the past.



Cover mailed by Ken Shotwell's great uncle in 1931 from Santa Rita, NM

Every stamp collector has a legacy waiting to be shared with others, and especially with young people. Don't let yours get left forgotten on a rusty siding. Whenever the time is appropriate, please consider donating your collection to the foundation. Who knows, your unborn grand-nephews or nieces may one day see you waving at them from the mail car. Finally, a traveler's tip for fellow "Philatelists" – if ever the opportunity should come your way, please treat yourself to a stop at the Postal History Foundation museum and library in Tucson. A sleeper car on the Sunset Limited is optional. All aboard!

**If you have a story about your philatelic history, submit it to PHF 920 N. First Avenue, Tucson, Arizona, 85719, attention, Lisa Dembowski or email [education@phftucson.org](mailto:education@phftucson.org).**

## Online Catalog Lists Our Arizona Post Office Photos

Descriptions of Arizona Post Office photographs in the Slusser's holdings are now available in our online catalog. These collections of images, long held in green hanging folders in a vertical file cabinet, are now housed in archival folders and boxes. Normally, a collection with such a breadth of subject terms (three-hundred eleven separate post office names) would be cataloged at the collection level, but in order to make each post office's name searchable in the catalog, every folder (post office) has a separate record. In this way, patrons can discover online what the Slusser's photographic holdings for a particular post office are. (The images themselves are not digitized.) Additionally, the names of people, events, and places are part of the item's description in the record, so that if a patron were to search a particular Arizona postmaster or a Native American Reservation, for example, the results would include the folder that contains those terms in the description.



The post office images originated from a variety of sources. One of those is the Postal History Foundation Post Office Field Trips, in which groups of members and volunteers traveled throughout Arizona, primarily during the 1980s and 1990s, to document visually both territorial and statehood post offices. There is also an archival collection associated with these field trips.

We don't have photos for all the past and present post offices in Arizona, nor their postmasters, so if you do, please consider donating to this important collection.

Our catalog is hosted at Pima County Public Library's website, <http://www.library.pima.gov/>. The call number for the Arizona Post Offices collection is PC 001 (PC = Photo Collection). A comprehensive finding aid for PC 001 can be found on our website at <http://www.postalhistoryfoundation.org/finding-aids.html>.

## New Literature Highlights

- Stephen Ose. *China Philately: Entires and Market Prices* (volumes 1 and 2; in English)
- Eckert, Steffen, Morscheck, Wolfgang, and Wagner, Gunther. *Stamp duty statutes, rates and application in Baden 1628-1952: Baden fiscal philately handbook and catalogue* (in German)
- London 2015 Europhilex rarities auction catalog
- Staff, Frank. *The Picture Postcard & Its Origins*
- *The Meter Stamp Bulletin*, the journal from the British group Meter Stamp Study Group (whole no. 1 (1959) – whole no. 132 (1984), plus two issues from an earlier iteration)
- *Civil War Times Illustrated* (journal, 1981 – 1995, selected issues)
- Wallen, Henry Davies and Evans, Andrew Wallace. *New Mexico Territory During the Civil War: Wallen and Evans inspection reports, 1862-1863*
- *Journey to Cochise County: a Journey Stories Companion Exhibit*

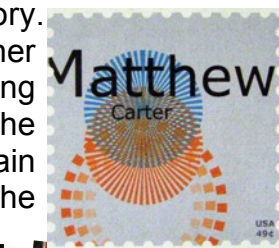
# University Students Enjoy Creating Stamps

Art students from the University of Arizona enjoyed a field trip to the Postal History Foundation during the Spring 2015 semester that dovetailed with their assignment to create a stamp commemorating a famous typographer they were interested in. The students experienced first hand what it is like to try to create a piece of artwork about a person of influence that will look great on the small area of a stamp.



Their instructor Karen Zimmerman, an Associate Professor of Visual Communications in the University of Arizona College of Art, teaches several classes including Typography, Design Studio, Motion Design, Design Culture and Language, and Digital Arts Theory. Professor Zimmerman was delighted to involve the PHF in her class and said that “the students were so excited after visiting the foundation. They really enjoyed this assignment.” The designs by her Typography 1 class will be displayed in the main building until October. Feel free to come down and enjoy the creativity of these talented artists.

From left to right listed by influential typographer and then student artist.  
 William Morris by Rebecca Van Scoter  
 Eric Gill by Alex Vigil-Emerson  
 Matthew Carter by Joe Marquis  
 Paul Renner by Allie Surges  
 Erik Spiekermann by Monica Ramirez



## Library Book Sales

The Slusser Library offers dozens of surplus philatelic books for sale. Included in this broad range of topics are postal histories of various U.S. states, military mail, air mail, railway post offices, revenues, postmarks, and postage stamps from various countries. Please see

<http://www.postalhistoryfoundation.org/library-sales.html> for a current listing of titles, prices, and conditions.

Additionally, we have books written by PHF members. Among them, *Camille Carries the Mail*, a delightful children's book by former librarian and member Lisa Hodgkins, *Framing History*, a booklet about the events depicted in the Cal Peters paintings that hang in the Slusser Library by our current librarian Valerie Kittell, and *Arizona Statehood Postmark Catalog* by member and former chairman Bob Bechtel.

**Contact Valerie Kittell at**

[library@phftucson.org](mailto:library@phftucson.org) or 520-623-6652x107.

## Volunteer Spotlight

The PHF is pleased to highlight the contributions of Sarah Duffy who, over the last three years, has become known as the “super soaker.”

The PHF receives donations throughout the year of stamps on and off paper. Sarah comes in three days a week and soaks the stamps that are soakable. We estimate that she has soaked off more than 200,000 stamps over the years.

Those stamps go directly to the students and other groups we support via the YES program.

Thank you, Super Soaker Sarah!





# Stamp Merit Badge Is Always Rewarding



Volunteer Andy Mosko helping scouts.

The Postal History Foundation campus is the perfect place to work on the Boy Scout Stamp Collecting Merit Badge. Everything a scout needs to complete the badge is available here, including the tools of the hobby, millions of stamps, philatelic supplies, the merit badge counselor, and volunteers to help guide the scouts.

The merit badge is very specialized and takes many hours to complete. Before they arrive at 8 am in the morning, I have already assigned them pre-work to take care of a couple of badge requirements. Then we work all day until 3:30 pm, with a 30-45 minute lunch break. If a scout is very focused and up to the challenge, he finishes by the time we clean up and depart.

The scouts who participate in our workshops leave with that wonderful feeling of accomplishment. Throughout the day they have learned about the history of philately, world geography, use of collecting tools, types of stamps, specific events in US postal history, foreign postal systems, hinging, mounting, grading stamps, scouts on stamps, and organizing a collection of their own choice, just to name a few. I pack all the requirements into the morning session except the last big one, which I reserve for the afternoon.

Local merit badge counselor and organizer, Stanley Stachowiak, gets the word out about the workshop, signs up the scouts, and provides an optional lunch that day. The pizza he picks up tastes great to all of us after a morning of constant teaching and learning.



The Slusser Library is a perfect workspace.

After lunch is the big push to gather stamps and organize a collection. A big thank you to Mr. Stachowiak, education assistant Linda Wynn, librarian Valerie Kittell, and local teacher Melissa Dembowski, for helping out during the afternoons when the scouts work on their collections. They pitch in and guide the scouts through the organization of their chosen stamps.

I truly enjoy teaching the merit badge workshops because the scouts are willing to learn, are polite, and well behaved. They are genuinely happy and exhausted when they leave and are very appreciative of everything they have learned in one day at the Postal History Foundation. Well done, scouts!

*Lisa Dembowski*, Director of Education & Merit Badge Counselor



## Famous Treasure Chests on Sale

Our chests are hand made by volunteer Barrett Benhke and then beautifully decorated with stamps by Nancy Benhke. They have been sanded and finished with Mod Podge twice, and are full of one pound of stamps.

Measurements are 17 x 8 x 8.

Weight 6 lbs 8.5 oz

\$75 includes domestic shipping!

\$50 if you pick up!

**New Members!**

Duke Hubbard  
Oro Valley, AZ

Steven Berlin  
St. Thomas, USVI

John Bloor  
Englewood, CO

Tina Keller  
South Riding, VA

Hans Kremer  
Danville, CA

Robert Kropp  
Tucson, AZ

Michael Longanecker  
Tucson, AZ

Rodney Motonaga  
SeaTac, WA

Robert Nagle  
Tucson, AZ

Lloyd Pearson  
Yuma, AZ

Amy Rule  
Tucson, AZ

Louis Zeelsdorf  
Erie, PA

**Tucson Stamp Club****First and Third Saturdays**

12 pm Bourse  
1pm Meeting & Program

*President: Stephen Hackney*

**July 18**

Topic: Medical

**August 1**

Topic: Crops and Harvest

**August 15**

Topic: Tucson

**September 5**

Topic: Education

**September 19**

Topic: Television

**October 3**

Topic: Christopher Columbus  
\*AUCTION LOTS DUE\*

**October 17**

Topic: Scary Stamps

**November 7**

Topic: Transportation

**November 21**

FALL AUCTION, 1PM SHARP

**PHF Calendar****Slusser Library Exhibit  
*Oh, What a Price to Pay!*****July 18**

PHF Board Meeting  
Tucson Stamp Club

**August 1**

Tucson Stamp Club

**August 15**

Tucson Stamp Club

**August 21**

Tucson Birthday Contest  
Awards Ceremony

**September 5**

Tucson Stamp Club

**September 13**

Post Card Exchange Club

**September 19**

Tucson Stamp Club

**October 3**

Tucson Stamp Club

**October 11**

Post Card Exchange Club

**October 17**

Tucson Stamp Club

**October 24**

Board of Directors Meeting

**November 7**

Tucson Stamp Club

**P.O.  
Box  
Banks**

Bank boxes with circa 1906 Hereford, Arizona post office box doors are still available for sale. Volunteer Barrett Benhke constructs the boxes from pine wood. Each box has a working combination and a coin slot in the back.

Size - 6½" x 5" x 5"

\$42 each

Shipping & Handling - \$15 each

**Call Lena at 520-623-6652**

**PHF Family Portfolio****Officers:**

Chairman: Bob Davis  
Vice Chair: Bill Kohl  
Secretary: Ron Newman  
Treasurer: Ted Maynard

**Staff:**

Executive Assistant:  
Lena Rogers  
Youth Education Director:  
Lisa Dembowski  
Librarian: Valerie Kittell  
Education Asst.: Linda Wynn

See past issues of Stamp Tracks  
at  
[www.postalhistoryfoundation.org](http://www.postalhistoryfoundation.org)

**Civil War Round Table?**

Contact  
Bob Burdick at  
[bobandglendaburdick@q.com](mailto:bobandglendaburdick@q.com)