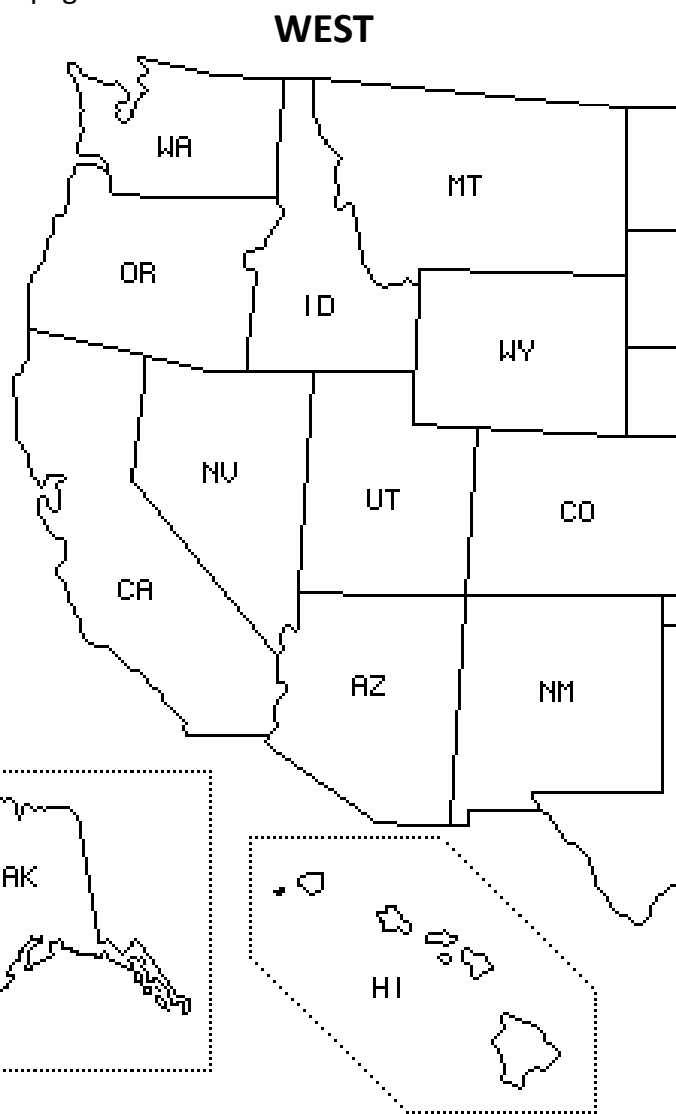


# State Abbreviations

Memorizing state abbreviations is very important, especially when using the mail, reading maps, and learning about the history and geography of the United States of America, USA. In this lesson you will learn or review the official United States Postal Service, USPS, abbreviations for each state. These two-letter abbreviations are used by most people when addressing envelopes. Every 50 years, on the anniversary of a state birthday, the USPS issues a statehood stamp. **Draw lines** from each statehood stamp to the correct abbreviation on the map. The stamps are in alphabetical order starting on the left and moving down around

the map. Each postal abbreviation contains two capital letters, starting with the first letter of the name. The second letter is also found in the name. Always ask for help, if you need it. The states have been separated into four groups over four pages.

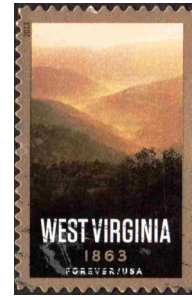


Connect more stamps to the states in this region of the US. Again, they are in alphabetical order starting with Illinois and moving left and down. This is the **MIDWEST**.

The image features a central map of the Midwestern United States, with state abbreviations: ND, SD, NE, KS, MN, IA, MO, WI, IL, IN, MI, and OH. Surrounding the map are several postage stamps, each representing a state in the region. The stamps are arranged in an alphabetical order starting from Illinois and moving left and down. The stamps include:

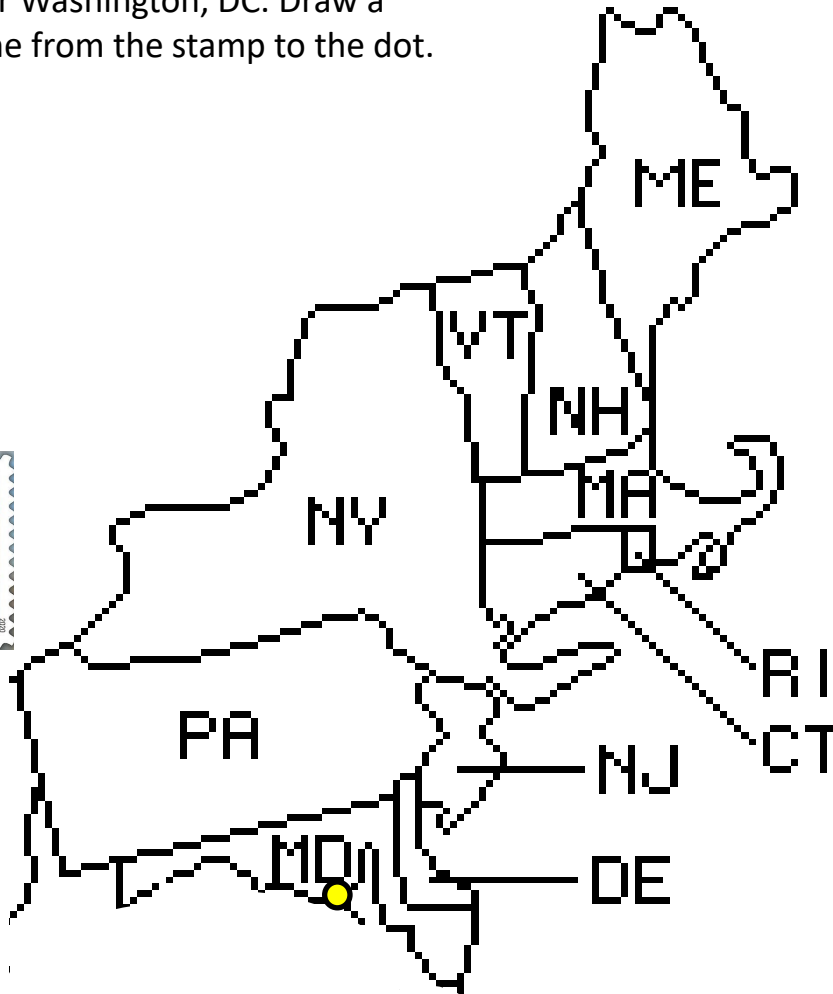
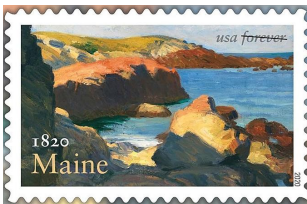
- Indiana (1816)
- Illinois (1818)
- Wisconsin (1848)
- South Dakota (1889)
- Iowa (1846)
- Kansas (1861)
- Michigan (1837-1987)
- Ohio (1803)
- Minnesota (1858-1958)
- Missouri (1821-1971)
- Nebraska (1867-1967)

On this page we are matching statehood stamps with an area generally called the **SOUTH**. Draw lines from the stamps to the states on the map.



The last section is the **NORTHEAST**. A yellow dot has been added to the map. This is the **capital** of the USA. The name of our capital is Washington, DC. The DC stands for District of Columbia. It is not a state but a city where our senators, representatives, supreme court judges, and president make decisions and run the government of the USA.

There is a stamp below for Washington, DC. Draw a line from the stamp to the dot.



Now let's see what you can remember! Try to write as many abbreviations as you can **next to the stamp pictures** on the following two pages. Try not to look at the maps from the previous pages.

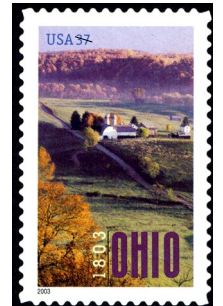
See Arizona, below left, for an example.

### WEST

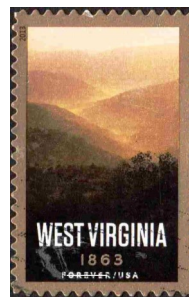
### MIDWEST



AZ



# SOUTH

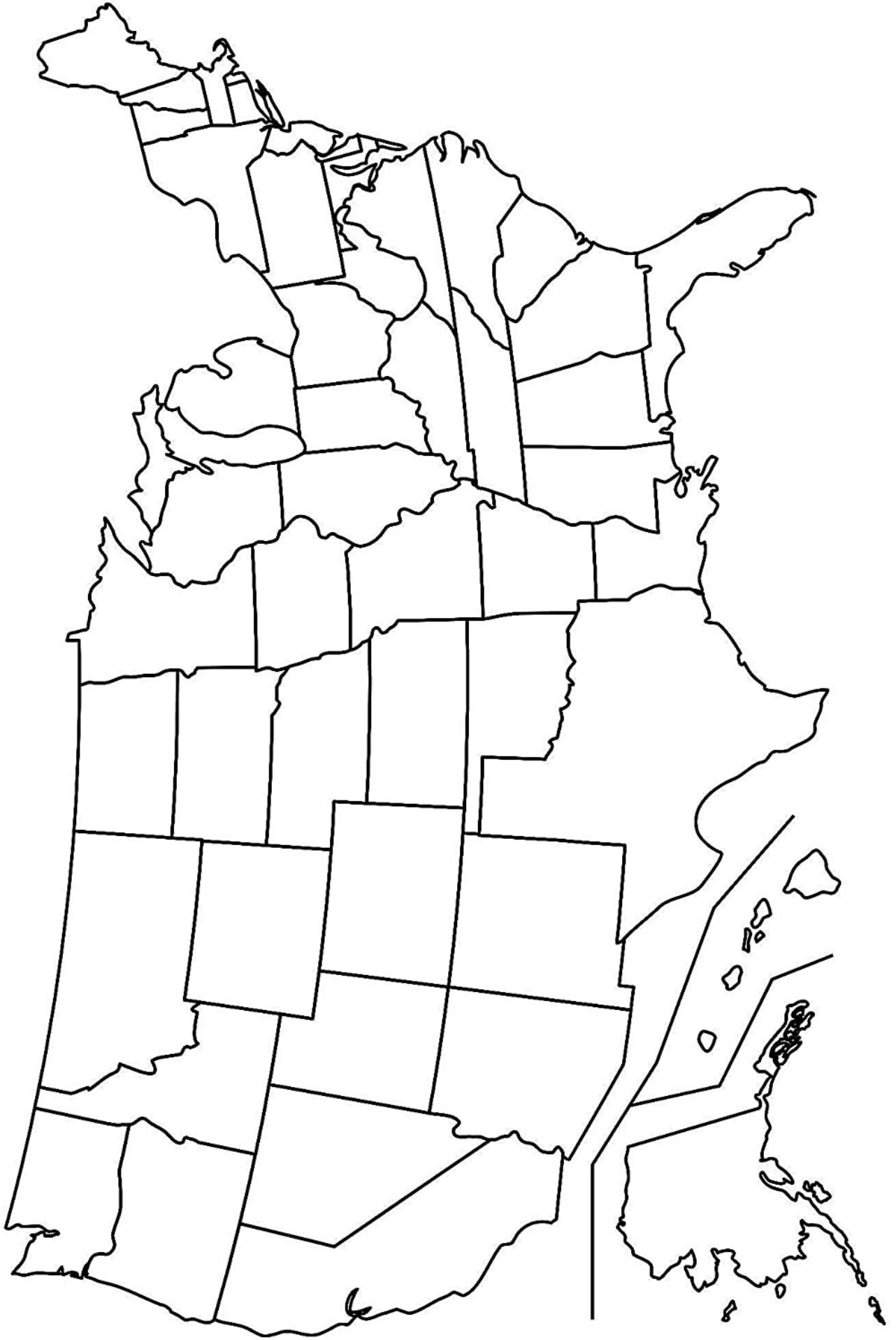


# NORTHEAST



Washington, \_\_\_\_\_

NOW, the big challenge! Below is a blank map. Try to label all of the states with the abbreviations. Feel free to make copies so you can continue to practice. Eventually try to remember how to spell the full names of the states. Put a dot where Washington, DC should be and label it **DC**. Feel free to draw lines from the tiny states off to the side to write the abbreviations.



Use this chart to practice writing the complete state names. Being able to spell the whole name of a state or country is a very grown up skill. Write the names next to the abbreviations. On the first line, fill out the name of our country. Good luck!

U \_\_\_\_\_ S \_\_\_\_\_ of A \_\_\_\_\_

AL	NE
AK	NV
AZ	NH
AR	NJ
CA	NM
CO	NY
CT	NC
DE	ND
FL	OH
GA	OK
HI	OR
ID	PA
IL	RI
IN	SC
IA	SD
KS	TN
KY	TX
LA	UT
ME	VT
MD	VA
MA	WA
MI	WV
MN	WI
MS	WY
MO	The capital of the USA is Washington, DC
MT	DC=



