

# Slusser Library

2013-2014

# Hello, Goodbye

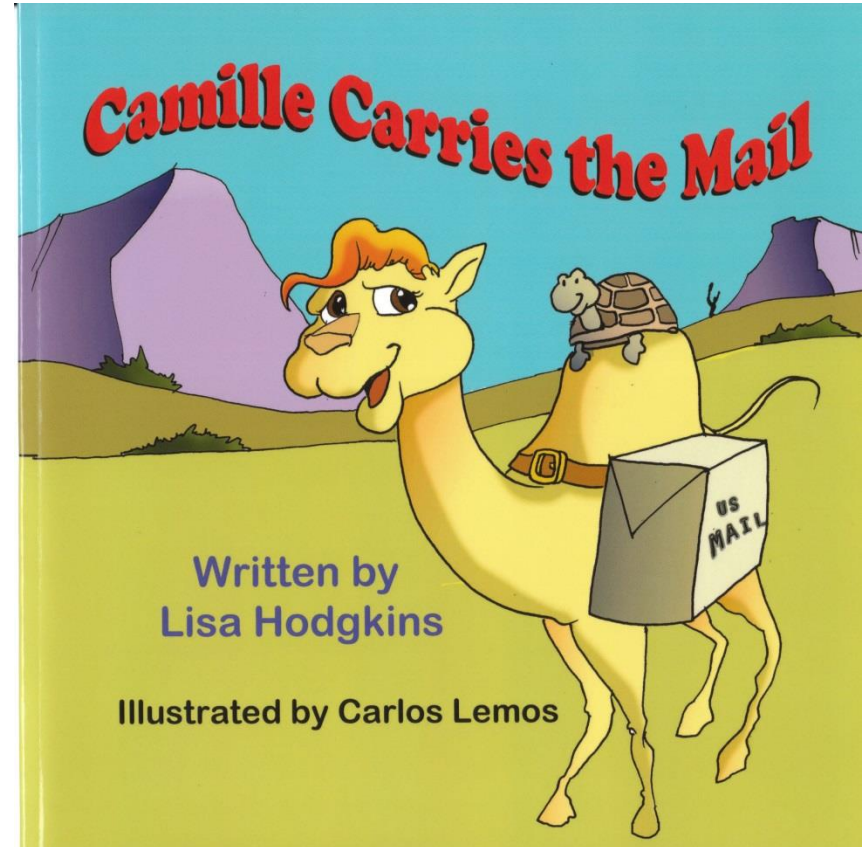
- We said good-bye to librarian & children's lit author Lisa Hodgkins
  - PCC is lucky to have her
  - And we still are, too (she volunteers!)
- We said hello to former teacher and current librarian Valerie Kittell
  - I'm pleased to bring my expertise, and
  - continue to learn something new everyday

# Thank you to our volunteers

- Your help is **invaluable**
  - We couldn't do what we do without you
- I enjoy your company
  - It's fun to learn more about our collections with you
- You are appreciated
  - Your time is valuable; thank you for giving us some of it

# Lisa's book, *Camille Carries the Mail*

- The June 2013 party was a success!
  - Great attendance & book sales
- We continue to sell books every month, all to benefit the PHF
  - Have you bought one yet?
- Thanks, Lisa!



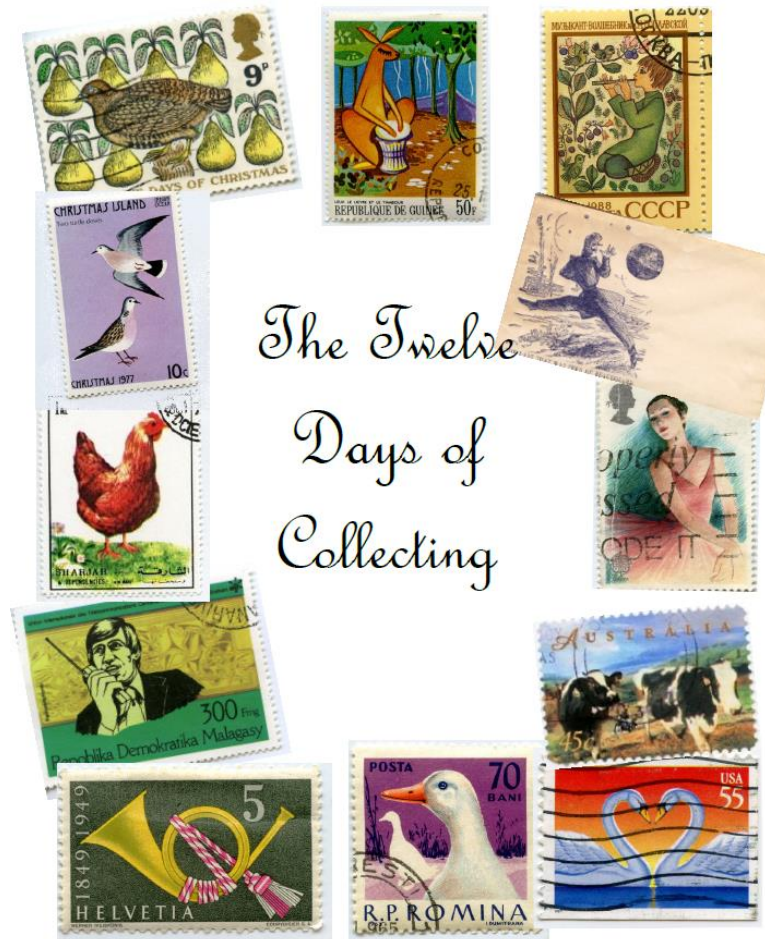
# Valerie's book, *Framing History*

- A colorful, illustrated book discussing the history of the events in the Cal Peters's paintings
- Proceeds benefit the PHF
  - Have you bought one yet?





# Slusser Exhibit Nov-Dec 2014



*The Twelve  
Days of  
Collecting*




# Slusser Exhibit: Jan - Feb 2014

The Postal History Foundation  
**PRESENTS**

---

**MINING** AND **THE**  
**MAIL**

---



★ How the early miners in the American Wild West got their mail ★

---

THROUGH FEBRUARY  
AT SLUSSER LIBRARY

---





# Slusser Exhibit: Mar – Jun 2014

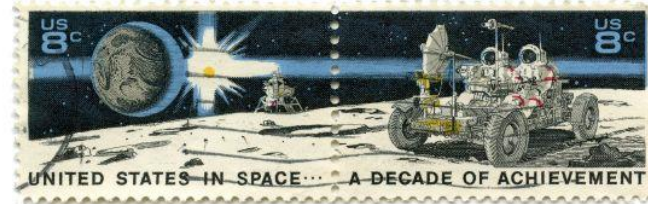
## Postage stamp design is part ART, part SCIENCE, part POLITICS, & a lot of HARD WORK.

1. The Stamp Advisory Committee recommends a subject.

*For example, U.S. space programs.*

3. The committee may make suggestions to the artist.

*As in Donahas discussing "twin" stamp design with McCall or XXXXX.*



2. The Design Coordinator finds an artist appropriate for the subject.

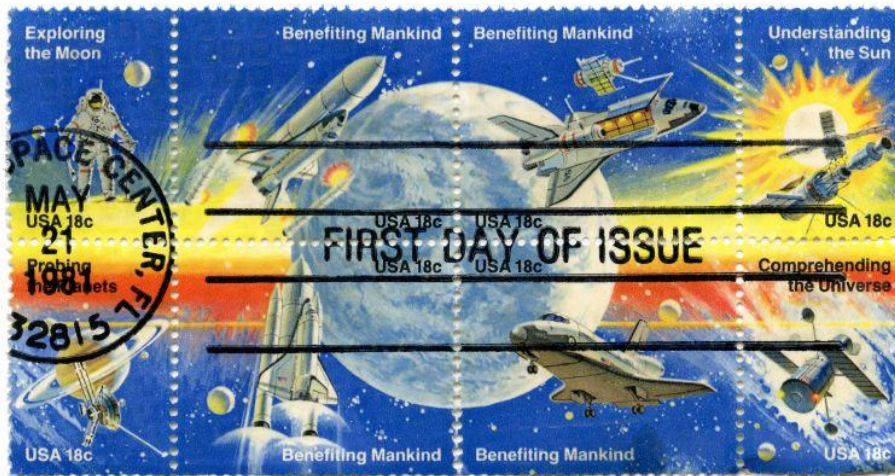
*Such as Steve Dohanos or Don McDowell contacting Robert McCall.*

4. The artist creates one or more concepts for the postage stamp design.

*McCall sketched in pencil, drew black and white, and experimented with color. Several theme ideas are jotted down next to images.*

5. The committee reviews the concepts, possibly making changes. They then approve a design.

*Even artists as respected and well-known as McCall are asked to make changes. It is a normal part of the process.*



6. The artist creates artwork exactly five times bigger than the actual stamp.

*Design, color, and detail must be "shrinkable" to fit appealingly on a postage stamp. The artist will also keep the printing method in mind when selecting color and type and mount of detail in the design.*

7. The finished artwork is approved by the committee.

*As a famous artist, and because space exploration is popular, McCall was often included in publicity of first day issue.*

# And so...

- Follow us on Facebook & Twitter
  - If you do that sort of thing
  - And if you don't, tell people who do
- Thanks, PHF volunteers & staff, for your philatelic help
- And thanks again, library volunteers for all you do
- See you at the Slusser!