

Stamp Tracks



NEWS AND
INFORMATION FOR
PHILATELISTS OF ALL AGES

Parcel Post

Member article by Postal History Foundation member Douglas Files.

For well over a century, the U.S. post office system only carried letters. No allowance was made for carrying packages. That changed in 1878 when the Universal Postal Union (UPU) set up the basis for an international system to deliver parcels. By treaty, the post office had to deliver packages sent to the United States from other UPU nations.

After many years of delivering only inbound international packages, American government officials decided that they finally had the infrastructure to begin a domestic and outbound international parcel service. Congress passed a law on August 24, 1912, authorizing the Postmaster General to begin a domestic parcel post. Four months later, the long-awaited service began, on New Year's Day, 1913. To garner publicity, the postmaster of New York City and the Postmaster General in Washington, DC posted parcels to each other at midnight on the day the service began.

Parcel post service was overwhelmingly popular and in the very first week, 4 million parcels were carried. The advent of domestic parcel post galvanized the mail-order business. Soon food, clothing, medications and



U.S. Parcel Post Stamps of 1912-1913. Bureau of Engraving and Printing. Composite and Imaging by Gwillhickers - U.S. Post Office: individual stamp images from the Smithsonian National Postal Museum.

Continued on page 6





Postal History Foundation

920 North 1st Avenue
Tucson, AZ 85719
520-623-6652

www.postalhistoryfoundation.org

Email us at: info@phftucson.org

Officers:

Chair: Bob Davis
Vice Chair: Mike Wood
Treasurer: Ted Maynard
Secretary: Steven Hamann

Museum, Library, and Post

Office Hours:

Monday through Friday except
Federal Holidays
8:30am-2:30pm

Stamp Discovery Education Program

Lisa Dembowski
520-623-6652 x 102
education@phftucson.org
Education Assistant—Kat Wahl

Slusser Library

Librarian/Archivist: Valerie Kittell
Call 520-623-6652x107 or
email library@phftucson.org

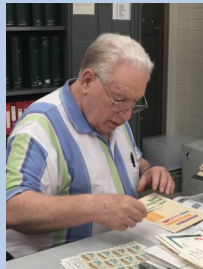
Philatelic Sales

Open M—F, except Tuesday
520-623-6652

General sales: Mike Wood
sales@phftucson.org
eBay sales: Bob Davis
ebaysales@phftucson.org

Message From the Chair

We had an enjoyable and productive time at ARIPEX 2023 this past February. It was held at the Mesa Convention Center east of Phoenix.



At this show we had many new faces visit our double table. Various covers were the attraction on Friday with buyers patiently sorting through box after box.

I want to thank Jack Mount for volunteering at the show again. He has been extraordinarily helpful at our tables for more than eight years! We are looking forward to attending again next year!



Have a pleasant spring and summer.

Bob Davis

From the Treasurer

Our Resources:

Talented Employees • Facilities
Energetic Volunteers • Dollars

They allow us to:

- ♦ *Introduce the world of stamps to children*
- ♦ *Operate a research library and archives*
- ♦ *Present an interactive museum experience*

Your continued membership support is crucial.

The children, teachers, and parents thank you!



Introducing Two New Employees and a Mascot!

We are happy to introduce to you Kelzi Bartholomaei and Harley Fowler. They have joined our staff during the past nine months, and we are lucky to have them.



Kelzi Bartholomaei

Kelzi Bartholomaei, our new part-time receptionist and executive secretary, lives in the neighborhood and enjoys walking to work. Kelzi has an international background due to her culinary work of the past 40 years. She spent 20 years as an international consultant for an ecotourism company in the Pacific Rim region, studying the culture and helping chefs and directors understand the people, traditions, artisans, spirituality, and food of a country or region. Kelzi also has the experience of owning a restaurant, Mother Hubbards Café, which she put on the map in the 2010s. Having sold it in 2018, she moved onto other culinary experiences. She is now an Ambassador Chef for the city of Tucson which is the first North American UNESCO City of Gastronomy. Kelzi now represents and promotes the historic and contemporary heritage of the Santa Cruz River Valley in her culinary work. She draws detailed plans for food creations that connect with our local region. Her culinary specialties are BBQ and churcuterie. During her free time, she likes to roller skate, cycle, and, of course, cook! She brings a unique perspective to our foundation and we enjoy her presence.

We have an infusion of young blood on our staff with Harley Fowler. Accompanying Harley everyday is our new mascot, "Mita," an Australian Shepard that tags along for medical support. They work in our contract post office four days a week. Harley graduated from Mountain View High School in nearby Marana almost eight years ago. Illustration is a passion for this budding artist who is self-taught and has goals of eventually developing a serial cartoon and possibly selling stationery, stickers, decals, and more on-line. Mita is a frisbee addict at home, but at work we throw smaller toys around, as being active is the name of the game for an Aussie Shepard. Harley says that "the Energizer bunny can eat his heart out" when compared to Mita. Harley and Mita are a happy dynamic duo that are fun to work with!



Harley and Mita

Sales Department Specials

- **Individual World Wide Stamps** — 50% SCV or less
- **US Mint Plate Blocks**
- **US Booklets**
- **Foreign Platinum Mines** 14.8 oz. off paper SCV from \$10 — \$135
- **Gold Mines** 14.8 oz. off paper — \$75
- **Mint Postage** — 40% discount from face
- **Postcards** — 25¢ each or 5 for \$1 unless marked

Call 520-623-6652 or email sales@phftucson.org

Also Available:

US and Foreign
(Singles & Sets)
First Day Covers
RPO Covers
US Year Sets
Topical Packets
First Flights

Collections
Foreign Covers
Catalogues
Stock Books
Stock Sheets
Used Albums
Mounts

A Collection of our

The Postal History Foundation has its own special collection of people on stamps. These people are



Fabulous Volunteers

the backbone of the PHF and we are very thankful for all our volunteers, past, present, and future.



What would we do without them?

They process donations, strip albums, soak stamps off paper, sort, file, prepare orders, help with events, take care of the yard, price covers, take care of visitors, and so much more.

Some of those pictured are board members that work at home in the evenings or on weekends for the PHF.

Most of the people shown on this page have volunteered on a weekly or monthly basis throughout this past year. We apologize if you are one of our wonderful volunteers who were accidentally omitted.

Thank you for your loyalty, dedication, hard work, and camaraderie.

We love you all!

Follow the PHF on Social Media



@phftucson



[facebook.com/
postalhistoryfoundation](https://facebook.com/postalhistoryfoundation)



@phftucson

continued from page 1

tobacco were being regularly sent by mail. Specific “parcel post stamps” were issued, but they were found to be unnecessary and were discontinued soon thereafter.



Staged photo of a toddler in the U.S. mail. Image from the National Postal Museum

When parcel post service was first established in 1913, few restrictions were placed on what could be placed in the mail. It did not take long before one Ohio couple placed their baby in the mail. Mr. and Mrs. Jesse Beauge of Glen Este, Ohio sent a ten-pound baby to his grandmother’s home a mile away. They paid 15 cents in postage; plus, in their defense, they paid extra for insurance to make sure their son would be delivered safely. They were not the only ones to mail family members. Other children were mailed much farther. Six-year-old Edna Neff was mailed from Florida to Virginia. May Pierstorff gained fame for travelling on an Idaho mail car in 1914 to relatives nearby. The stamps paying the postage were affixed to her coat. May’s journey was covered in a popular children’s book called *Mailing May*, which is in the Slusser library.

Readers will be relieved to learn that children in the mail were not placed in cardboard boxes. Instead, they were carried or walked alongside mail carriers and all reports state that they were treated well during transit. Still, in 1914, the Postmaster General established a regulation that prevented the carriage of human beings in the U.S. mail. After all, these children were increasingly mentioned in the press and the media attention was avid. It was only a matter of time before a “human parcel” would be lost in the mail.

The 1914 policy forbidding people to be carried in the mail effectively ended the practice of mailing children. However, decades later, another person was unknowingly carried in the mail. In 1980, William DeLucia sealed himself in a crate with food, water and an oxygen tank. A label identified the contents of the container as musical instruments. During his trip, DeLucia climbed out of the box, stole thousands of dollars’ worth of items from the registered mail, and closed himself back in the crate. Unfortunately for him, the crate popped open when it arrived at the Atlanta airport, and DeLucia was promptly arrested.

In the 21st century, package delivery makes up a greater part of its overall business than ever before. Today, private carriers compete with the U.S. Postal Service to deliver packages, but the USPS still carries 3.3 million pounds of parcels each week.



The “musical instrument” box that held William DeLucia in 1980.



Doug Files has been collecting stamps for 49 years. While working at Davis-Monthan AFB in Tucson, AZ, in 2010-2011, he attended local stamp club meetings as well as some PHF board meetings. He has been a member of the PHF since 2011. Doug has been working as a contractor for the U.S. Air Force for 15 years and before that “separated” from the USAF as a Lieutenant Colonel.

Due to lack of space, references for the article above are available upon request.

Education Update by Lisa Dembowski education@phftucson.org



Interactive Activities Create Memorable Moments

We support over 10,000 students in the United States and Canada annually via lessons, topical requests, personal letter requests, and stamp kit orders. We also provide an enriching educational field trip experience at our facilities that enhances students' imaginations as they experience postal history in our Old Naco Post Office museum. While participating in various activities, they are also adding valuable learning skills that they will use the rest of their lives.

Using the mail will always be a part of adulthood, whether mailing a package, overnighting important papers, or other business. Our field trips connect students with the mail system experience.

During our field trips we ask the question, "What is the mail?" Talking points can be, but are not limited, to:

- Do you have a mailbox?
- How is the mail delivered?
- What do we have to write on the mail we send?
- Why do we have to buy stamps, what is the money used for, and where do we attach them?
- Why are stamps canceled and what is a postmark?
- What kind of transportation do carriers use in different areas of the U.S. and world?

All of these talking points are accompanied by photos, enlarged pictures of stamps, and include boxes and large envelopes previously delivered to the PHF.

The students write postcards or letters and take them to the PHF contract post office in the other building where they help cancel their own mail. Occasionally, a mail carrier drops in at just the right time, causing excitement.

After mailing their letters or postcards they interact with several activities in our museum, such as weighing packages, trying on shirts, and carrying bags to experience the weight involved in daily delivery of the mail (50 pounds per bag). They can also practice cancelling and sorting the mail. All these activities, and more enhance language arts and STEM learning.

These are just a few examples of how we provide experiences that connect with real life and create lasting memories.



Mother and daughter have fun in the Old Naco Post Office.




Collect The Southwest

SOUTHWESTERN POSTAL HISTORY

The authority in Arizona & New Mexico postal history research & publications

Arizona - New Mexico Postal History Society

Join this month and save over 30% Yearly memberships starting at only \$8.00

- Newly expanded Roadrunner postal history journal
- Discounts on current catalogs & publications

Write today for your complimentary Roadrunner journal
E-mail to roadrunneredit@gmail.com

GRAND CANYON FROM POINT IMPERIAL ON NORTH RIM

PHF Calendar

Board Meeting
July 2023

Visiting the PHF

Open M-F 8:30am-2:30pm
with some exceptions.
The library and museum parts
of our campus may be closed
on the day of scheduled field
trips, meetings, and large
group tours. Please check the
online calendar or call at
520-623-6652 x 100 or 101

Our online public calendar is
found on our website at:
postalhistoryfoundation.org
click on **Latest** → then click on
Event Calendar

OR

[postalhistoryfoundation.org/
visit/calendar/](http://postalhistoryfoundation.org/visit/calendar/)

Experience the Exhibits!

You can visit our permanent
and rotating exhibits in person
(see Visiting the PHF, above) or
online at home by going to our
website and clicking
Museum → Permanent Exhibits
or
Museum → Rotating Exhibit →
See more

Discount Postage for Sale

Packets of mint stamps, lower
denominations for use on your
outgoing mail. **\$10 value for \$6.**

New Members

Bruce Bederman
Tucson AZ

Mike Brown
Carmel, CA

Sarah Calahan
Moulton, AL

Robert Harman
Langhorne, PA

Alice McKernan
Tucson, AZ

Carl I. Shaff
Gallatin, TN

Alvin Wright
Puyallup, WA

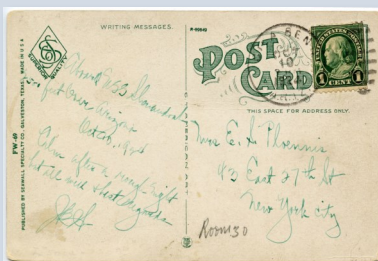
You are holding the **Stamp
Tracks** in your hand, but
you can also view it and
older issues with clickable
links, on our website at:

[postalhistoryfoundation.org/
about/stamp-tracks-
newsletter](http://postalhistoryfoundation.org/about/stamp-tracks-newsletter)

CLASSIC POSTCARDS We've got thousands!

Call Mike Wood at
520-623-6652 x 101

Or email
sales@phftucson.org



In Memoriam

Dick Gray
Member

Robert Kropp
Member

Frank Slezak
Member

STAMPS by the POUND

Worldwide Mixture or
Individual Countries



Many countries are available
and prices vary.

Call for availability
520-623-6652

Free Domestic Shipping

Tucson Stamp Club

The club is currently meeting
at the
Fraternal Order of
Police Lodge on
3445 N Dodge Blvd, 85716

For more information contact:
Edward Ejek
edwardwejk@earthlink.net
520-574-5535